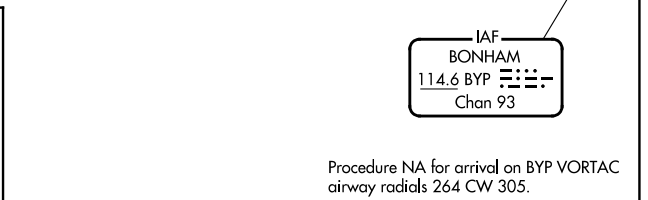
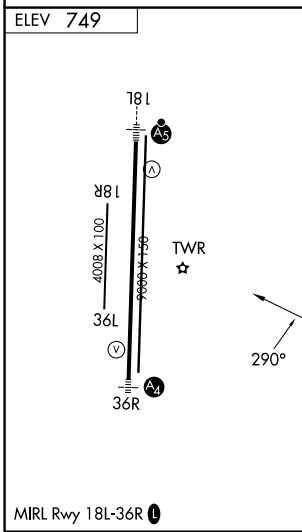
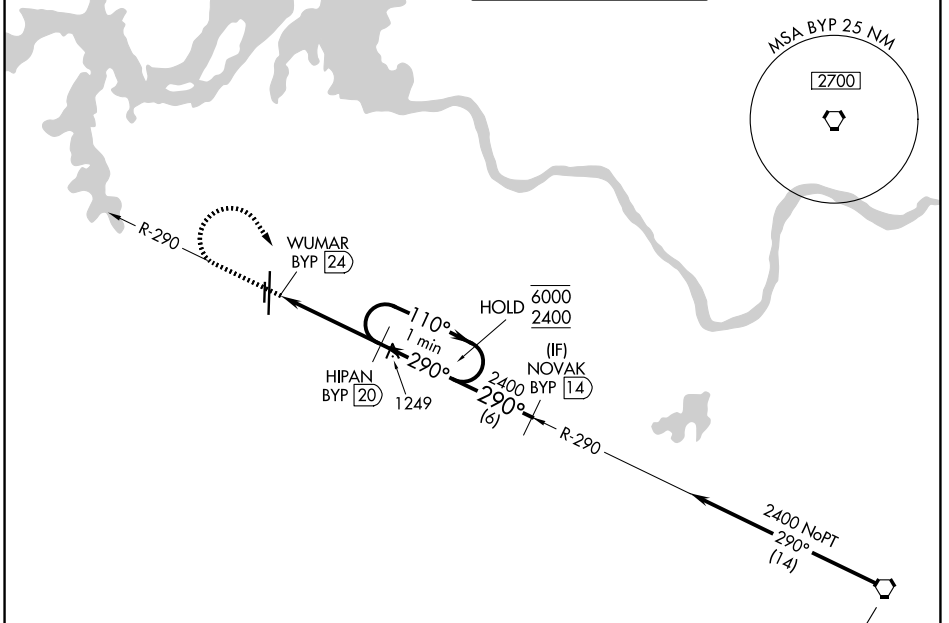


VORTAC BYP <b>114.6</b> Chan <b>93</b>	APP CRS <b>290°</b>	Rwy Ldg TDZE Apt Elev <b>749</b>	<b>N/A</b> <b>N/A</b> <b>749</b>
--	------------------------	---	--

# VOR-A

NORTH TEXAS RGNL/PERRIN FLD (GYI)

DME required.		MISSED APPROACH: Climb to 2000 then climbing right turn to 2400 on heading 140° and BYP VORTAC R-290 to HIPAN/20 DME and hold.	
<p>Circling Rwy 18R, 36L NA at night.</p>			
ATIS <b>118.775</b>	FORT WORTH CENTER <b>124.75 323.0</b>	NORTH TEXAS TOWER ★ <b>120.575</b> (CTAF) <b>233.7</b>	GND CON <b>124.125</b>



2000	2400	BYP R-290	HIPAN BYP 20	HIPAN BYP 20	One Minute Holding Pattern
↑	hdg 140°				
		WUMAR BYP 24	4 NM	110° → 6000	← 290° 2400

CATEGORY	A	B	C	D
CIRCLING	1340-1	591 (600-1)	1400-1¾ 651 (700-1¾)	1540-2½ 791 (800-2½)

# VOR-A

SC-2, 14 MAY 2026 to 11 JUN 2026

SC-2, 14 MAY 2026 to 11 JUN 2026