

HI-TACAN Z RWY 33

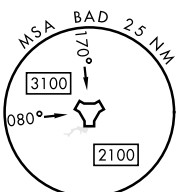
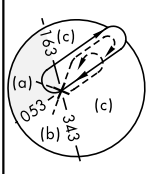
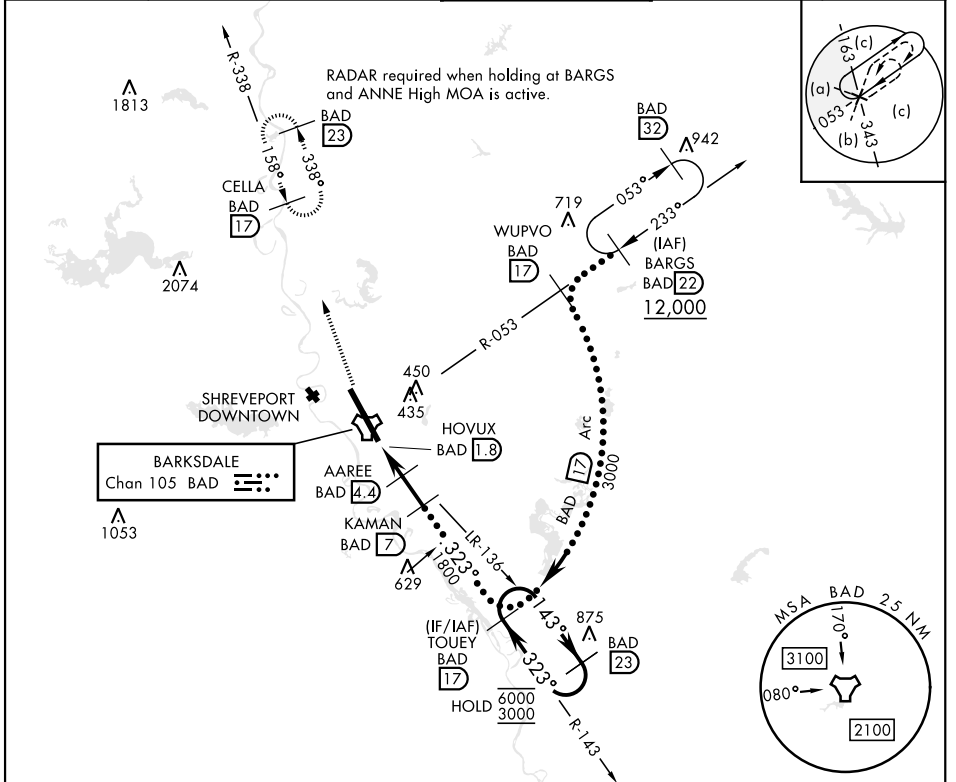
TACAN BAD Chan 105	APCH CRS 323°	Rwy Idg THRE 161 Arpt Elev 165	[USAF]	BARKSDALE AFB (KBAD)
------------------------------	-------------------------	--	--------	----------------------

* When ALS inop, increase CAT CDE vis to 1 $\frac{1}{2}$ miles.
 ** Circling not authorized W of Rwy.

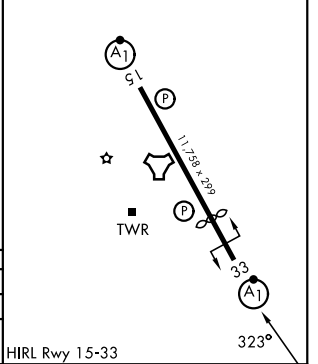
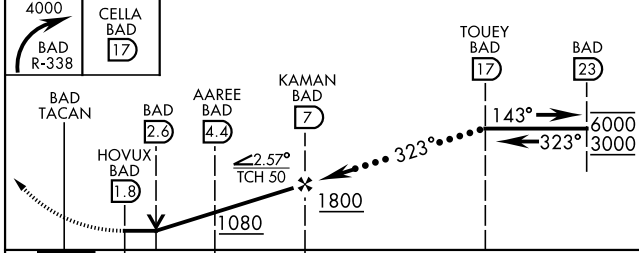


MISSED APPROACH: Climb to 4000 via BAD R-338 direct CELLA and hold.

ATIS 307.025	SHREVEPORT APP CON 320°-152° 123.75 360.725 153°-319° 119.9 335.55	TOWER* 128.25 278.3	GND CON 121.8 253.5	ASR
------------------------	--	-------------------------------	-------------------------------	-----



EMERG SAFE ALT 100 NM 3200 ELEV 165 THRE 161



CATEGORY	C	D	E
S-33*	600/40	437	(500- $\frac{3}{4}$)
CIRCLING**	NOT AUTHORIZED	780-2 615 (700-2)	780-2 $\frac{1}{4}$ 615 (700-2 $\frac{1}{4}$)

HIRL Rwy 15-33

HI-TACAN Z RWY 33



SC-4, 14 MAY 2026 to 11 JUN 2026

SC-4, 14 MAY 2026 to 11 JUN 2026