

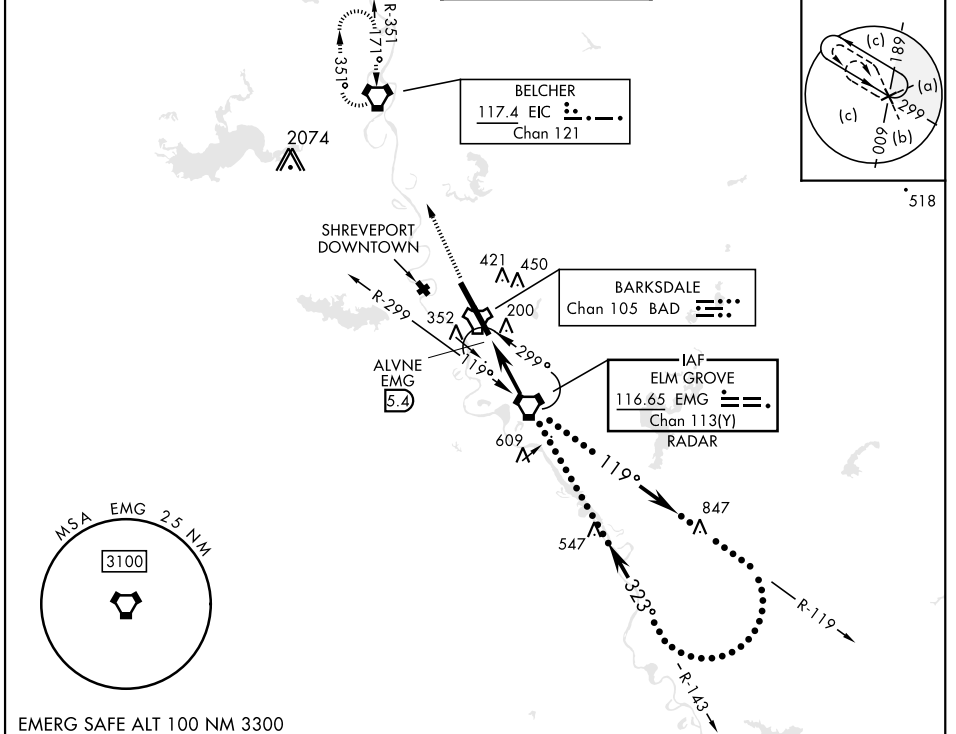
BOSSIER CITY, LOUISIANA

HI-VOR/DME Z RWY 33

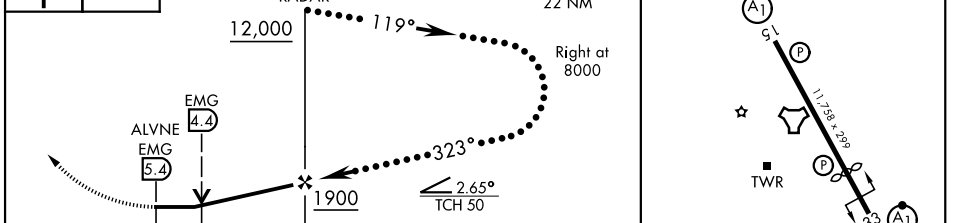
VORTAC EMG 116.65 Chan 113(Y)	APCH CRS 323°	Rwy ldg THRE 161 Arpt Elev 165	[USAF]	BARKSDALE AFB (KBAD)
---	-------------------------	--	--------	----------------------

DME or RADAR required.	ALSF-1 	MISSED APPROACH: Climb to 3100 direct to EIC VORTAC and hold.
* When ALS inop, increase CAT CDE vis to 1 3/8 miles. ** Circling not authorized W of Rwy.		

ATIS 307.025	SHREVEPORT APP CON 320°-152° 123.75 360.725 153°-319° 119.9 335.55	TOWER* 128.25 278.3	GND CON 121.8 253.5	ASR
------------------------	--	-------------------------------	-------------------------------	-----



EMERG SAFE ALT 100 NM 3300	ELEV 165	THRE 161
----------------------------	----------	----------



CATEGORY	C	D	E	HIRL Rwy 15-33
S-33*	640/50	479	(500-1)	FAF to MAP 5.4 NM
CIRCLING**	NOT AUTHORIZED	760-2	780-2 1/4	Knots 120 140 160 180 200
		595 (600-2)	615 (700-2 1/4)	Min:Sec 2:42 2:19 2:01 1:48 1:37

BOSSIER CITY, LOUISIANA 32°30'N-93°40'W BARKSDALE AFB (KBAD)

HI-VOR/DME Z RWY 33

SC-4, 14 MAY 2026 to 11 JUN 2026

SC-4, 14 MAY 2026 to 11 JUN 2026