

TACAN Y RWY 15

TACAN BAD Chan 105	APCH CRS 158°	Rwy Ldg THRE 163 Arprt Elev 165
------------------------------	-------------------------	--

[USAF]

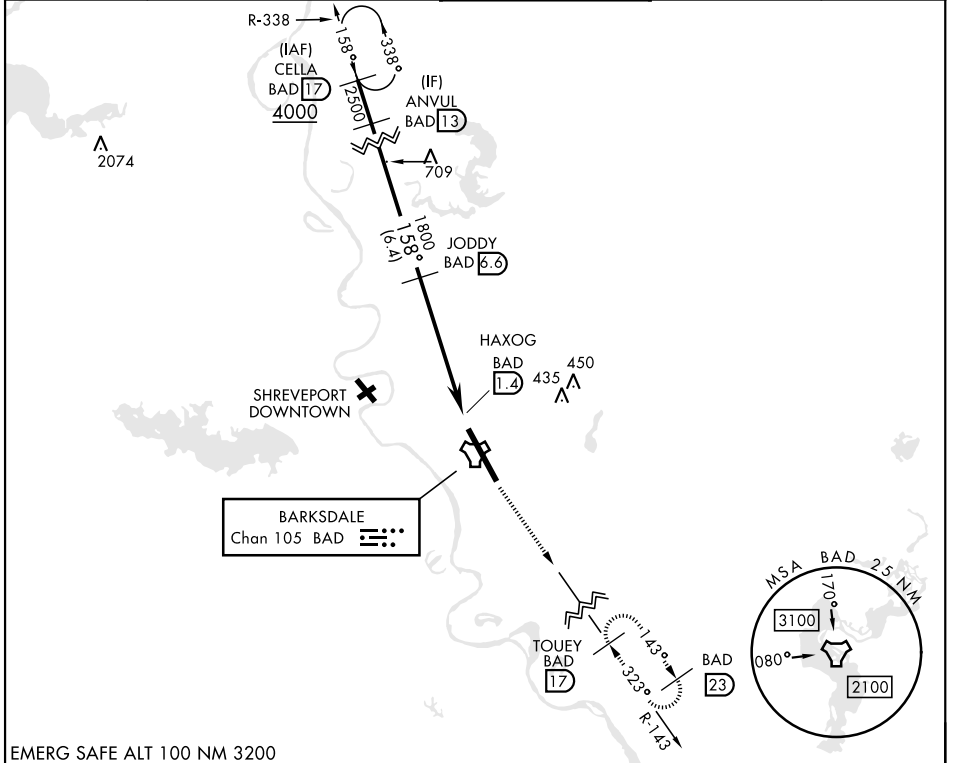
BARKSDALE AFB (KBAD)

* When ALS inop, increase CAT AB RVR to 55 and vis to 1 mile
CAT CDE vis to 1 3/4 miles.
** Circling not authorized W of Rwy.



MISSED APPROACH: Climb to 3000 via
BAD R-143 direct TOUEY and hold.

ATIS 307.025	SHREVEPORT APP CON 320°-152° 123.75 360.725 153°-319° 119.9 335.55	TOWER * 128.25 278.3	GND CON 121.8 253.5	ASR
------------------------	--	--------------------------------	-------------------------------	-----



EMERG SAFE ALT 100 NM 3200

ANVUL BAD 13	JODDY BAD 6.6	HAXOG BAD 1.4	TACAN BAD 2.4	TOUEY BAD 17	ELEV 165	THRE 163
CATEGORY	A	B	C	D	E	
S-15 *	640/24	475 (500-1/2)	640/50	475	(500-1)	
CIRCLING **	NOT AUTHORIZED			780-2 615 (700-2)	780-2 1/4 615 (700-2 1/4)	HIRL Rwy 15-33

TACAN Y RWY 15

SC-4, 14 MAY 2026 to 11 JUN 2026

SC-4, 14 MAY 2026 to 11 JUN 2026