

# VOR/DME Y RWY 33

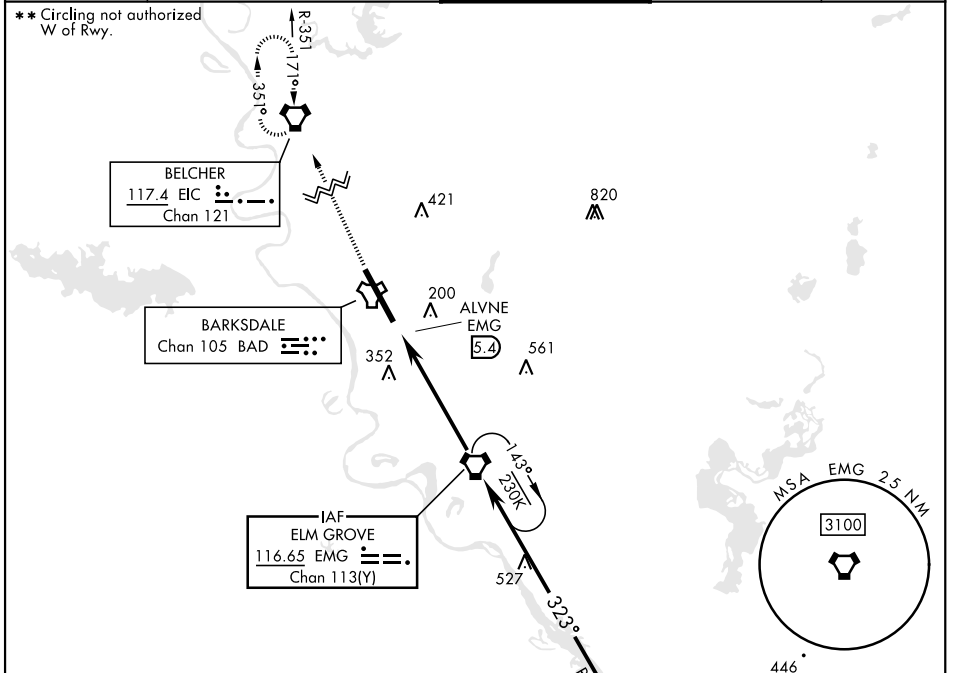
VORTAC EMG <b>116.65</b> Chan <b>113(Y)</b>	APCH CRS <b>323°</b>	Rwy Idg THRE <b>161</b> Arprt Elev <b>165</b>	[USAF]	BARKSDALE AFB (KBAD)
---	-------------------------	---	--------	----------------------

DME or RADAR required. ALSF-1  
**(A1)**

\* When ALS inop, increase CAT AB RVR to 55 and vis to 1 mile, CAT CDE vis to 1 1/2 miles.

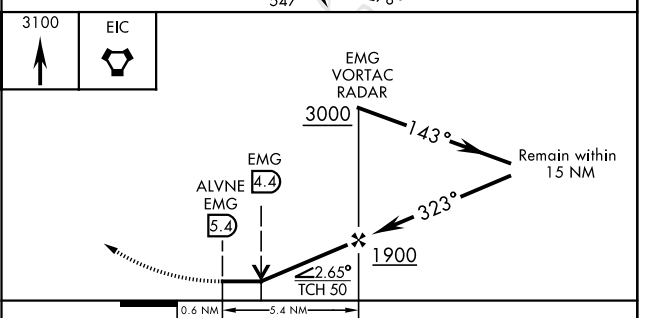
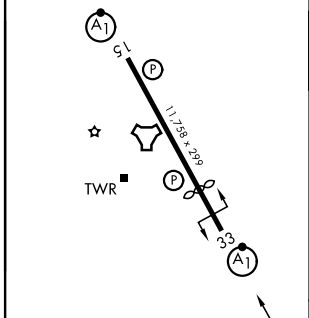
MISSED APPROACH: Climb to 3100 direct EIC VORTAC and hold.

ATIS <b>307.025</b>	SHREVEPORT APP CON <b>123.75 360.725</b> (320°-152°) <b>119.9 335.55</b> (153°-319°)	TOWER ★ <b>128.25 278.3</b>	GND CON <b>121.8 253.5</b>	ASR
------------------------	--	--------------------------------	-------------------------------	-----



EMERG SAFE ALT 100 NM 3300

ELEV	165	THRE	161
------	-----	------	-----



HIRL Rwy 15-33					
FAF to MAP 5.4 NM					
Knots	60	90	120	150	180
Min:Sec	5:24	3:36	2:42	2:10	1:48
CIRCLING **	NOT AUTHORIZED			760-2 595 (600-2)	780-2 1/4 615 (700-2 1/4)

# VOR/DME Y RWY 33

SC-4, 14 MAY 2026 to 11 JUN 2026

SC-4, 14 MAY 2026 to 11 JUN 2026