

WAAS CH 58140 W32A	APP CRS 319°	Rwy Ldg TDZE 179 Apt Elev 179	5017
--	------------------------	---	-------------

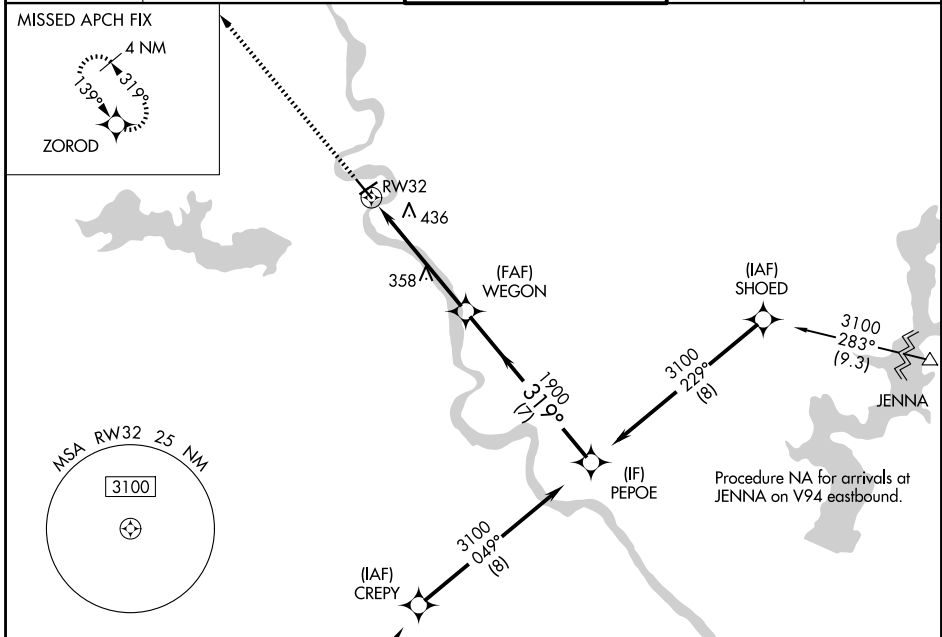
RNAV (GPS) RWY 32

SHREVEPORT DOWNTOWN (DTN)

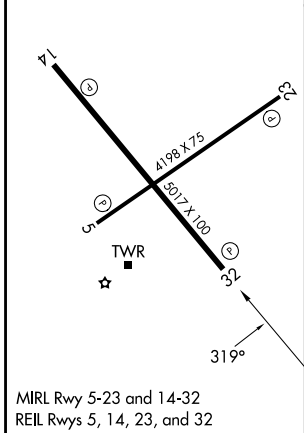
RNP APCH.
 Rwy 32 helicopter visibility reduction below 1 SM NA. Straight-in Rwy 32 NA at night. Circling Rwy 5, 23, 32 NA at night.

MISSED APPROACH: Climb to 3100 direct ZOROD and hold.

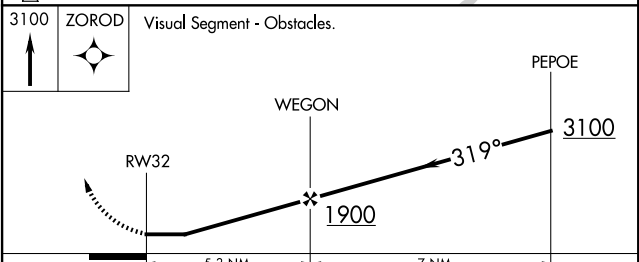
ASOS 118.525	SHREVEPORT APP CON 119.9 335.55 123.75 360.725 (320°-152°)	DOWNTOWN TOWER ★ 120.225 (CTAF) 284.6	GND CON 121.65	UNICOM 122.95
------------------------	--	--	--------------------------	-------------------------



ELEV 179	TDZE 179
-----------------	-----------------



MOKPE Procedure NA for arrivals at MOKPE on V407 southwest bound.
 CREPY Procedure NA for arrivals at JENNA on V94 eastbound.



CATEGORY	A	B	C	D
LP MDA	620-1	441 (500-1)	620-1 $\frac{3}{8}$	441 (500-1 $\frac{3}{8}$)
LNAV MDA	740-1	561 (600-1)	740-1 $\frac{5}{8}$	561 (600-1 $\frac{5}{8}$)
CIRCLING	800-1 621 (700-1)	920-1 741 (800-1)	1100-2 $\frac{3}{4}$ 921 (1000-2 $\frac{3}{4}$)	1100-3 921 (1000-3)

SC-4, 14 MAY 2026 to 11 JUN 2026

SC-4, 14 MAY 2026 to 11 JUN 2026