

SIoux FALLS, SOUTH DAKOTA

# HI-ILS Z or LOC Z RWY 3

LOC I-FSD <b>109.9</b>	APCH CRS <b>030°</b>	Rwy Idg <b>8999</b>	TDZE <b>1424</b>
		Arprt Elev <b>1430</b>	

[USAF]

JOE FOSS FLD (KFSD)

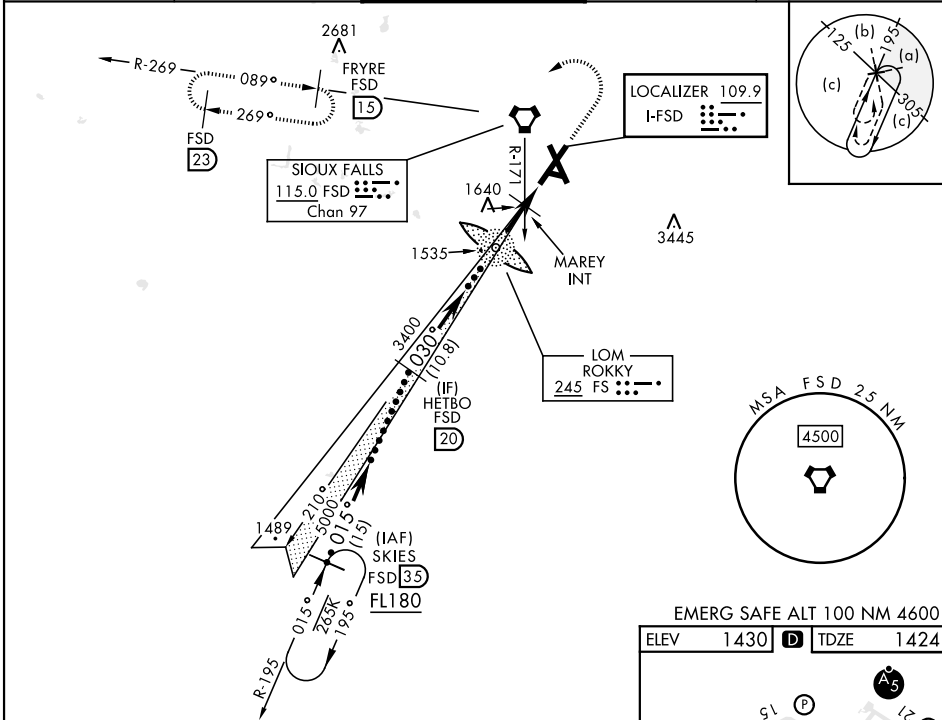
RADAR and DME required.

- ▲ \* When ALS inop, increase CAT CDE RVR to 40, vis to ¾ mile.
- \*\* When ALS inop, increase CAT CDE vis to 1 ½ miles.
- \*\*\* When ALS inop, increase CAT CDE vis to 1 ¾ miles.

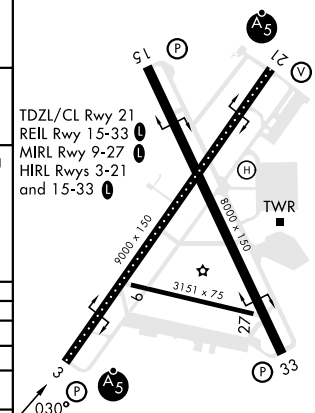
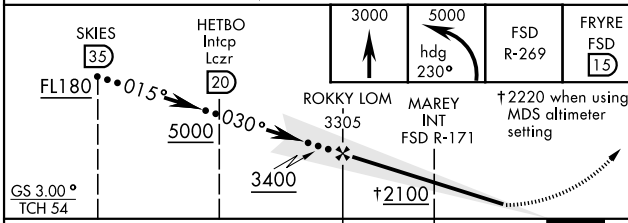


MISSED APPROACH: Climb to 3000, then climbing left turn to 5000 on heading 230° and FSD VORTAC R-269 to FRYRE (FSD 15 DME) and hold.

ATIS <b>126.6</b>	SIoux FALLS APP CON <b>125.8 306.2</b>	SIoux FALLS TOWER ★ <b>118.3(CTAF) 0 257.8</b>	GND CON <b>121.9 348.6</b>	ASR
----------------------	---	---	-------------------------------	-----



EMERG SAFE ALT 100 NM 4600  
ELEV 1430 TDZE 1424



CATEGORY	C	D	E
S-ILS 3 *	1674/24	250	(300-½)
S-LOC 3 **	2100-1½ 676 (700-1½)	2100-1½ 676 (700-1½)	
CIRCLING	2100-1 ⅞ 670 (700-1 ⅞)	2200-2 ½ 770 (800-2 ½)	2300-3 870 (900-3)
MAREY FIX MINIMUMS (DUAL VOR RECEIVERS REQUIRED)			
S-LOC 3 ***	1940/55	516	(600-1)
CIRCLING	2060-1 ¾ 630 (700-1 ¾)	2200-2 ½ 770 (800-2 ½)	2300-3 870 (900-3)

SIoux FALLS, SOUTH DAKOTA  
Amdt 10 07AUG25

43° 35' N-96° 45' W

JOE FOSS FLD (KFSD)

# HI-ILS Z or LOC Z RWY 3

NC-1, 14 MAY 2026 to 11 JUN 2026

NC-1, 14 MAY 2026 to 11 JUN 2026