

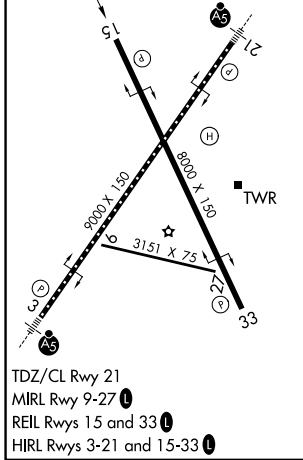
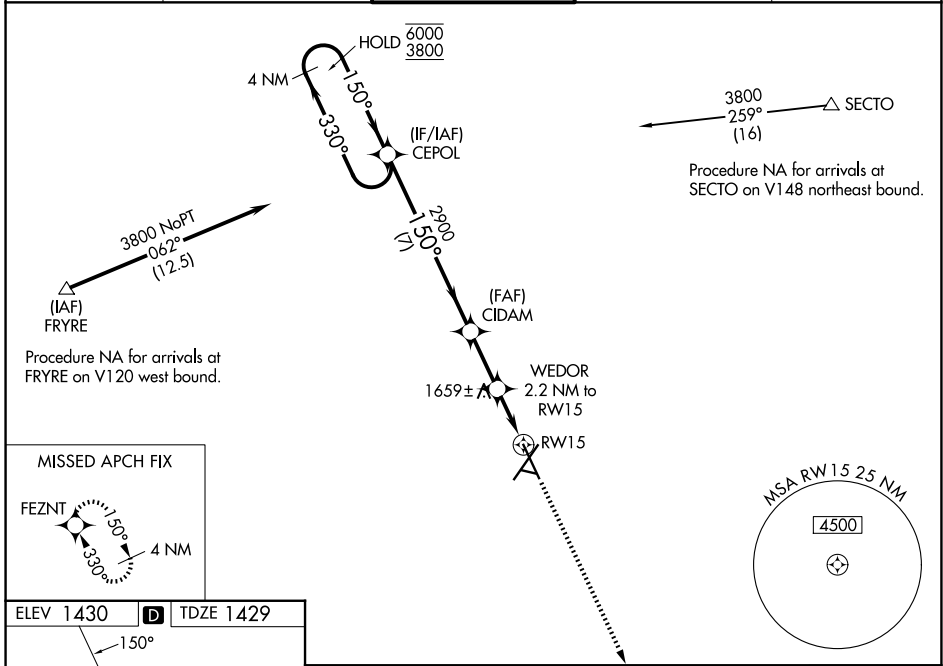
WAAS CH 90235 W15A	APP CRS 150°	Rwy Ldg TDZE Apt Elev	8000 1429 1430
--	------------------------	-----------------------------	---

RNAV (GPS) RWY 15

JOE FOSS FLD (F'SD)

RNP APCH-GPS.		MISSED APPROACH: Climb to 3800 direct FEZNT and hold.
<p>▽ Rwy 15 helicopter visibility reduction below 3/4 SM NA. For uncompensated Baro-VNAV systems, LNAV/VNAV NA below -21°C or above 54°C.</p> <p>ASR -30°C</p>		

ATIS 126.6	SIoux FALLS APP CON * 125.8 284.725	SIoux FALLS TOWER * 118.3 (CTAF) 257.8	GND CON 121.9 348.6	UNICOM 122.95
----------------------	---	--	-------------------------------	-------------------------



ELEV 1430	TDZE 1429	<p>4 NM Holding Pattern</p> <p>CEPOL CIDAM WEDOR 2.2 NM to RWY 15</p> <p>6000 ← 330° 3800 150° → 150° 2900 2160 1.4 NM to RWY 15 RWY 15</p> <p>GP 3.00° TCH 48</p> <p>7 NM 2.3 NM 0.8 1.4 NM</p>			
		3800		FEZNT	
CATEGORY	A	B	C	D	
LPV DA	1839-1 1/8		410 (500-1 1/8)		
LNAV/VNAV DA	1909-1 3/8		480 (500-1 3/8)		
LNAV MDA	1920-1 491 (500-1)		1920-1 3/8		491 (500-1 3/8)
CIRCLING	1960-1	1980-1	2060-1 3/4	2200-2 1/2	
	530 (600-1)	550 (600-1)	630 (700-1 3/4)	770 (800-2 1/2)	

NC-1, 14 MAY 2026 to 11 JUN 2026

NC-1, 14 MAY 2026 to 11 JUN 2026