

APP CRS <b>272°</b>	Rwy Ldg TDZE Apt Elev	<b>3151</b> <b>1424</b> <b>1430</b>
------------------------	-----------------------------	---

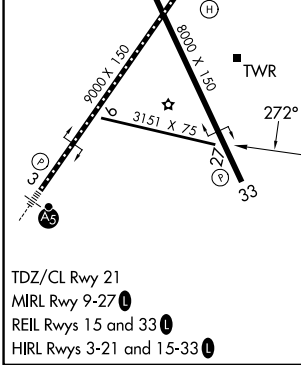
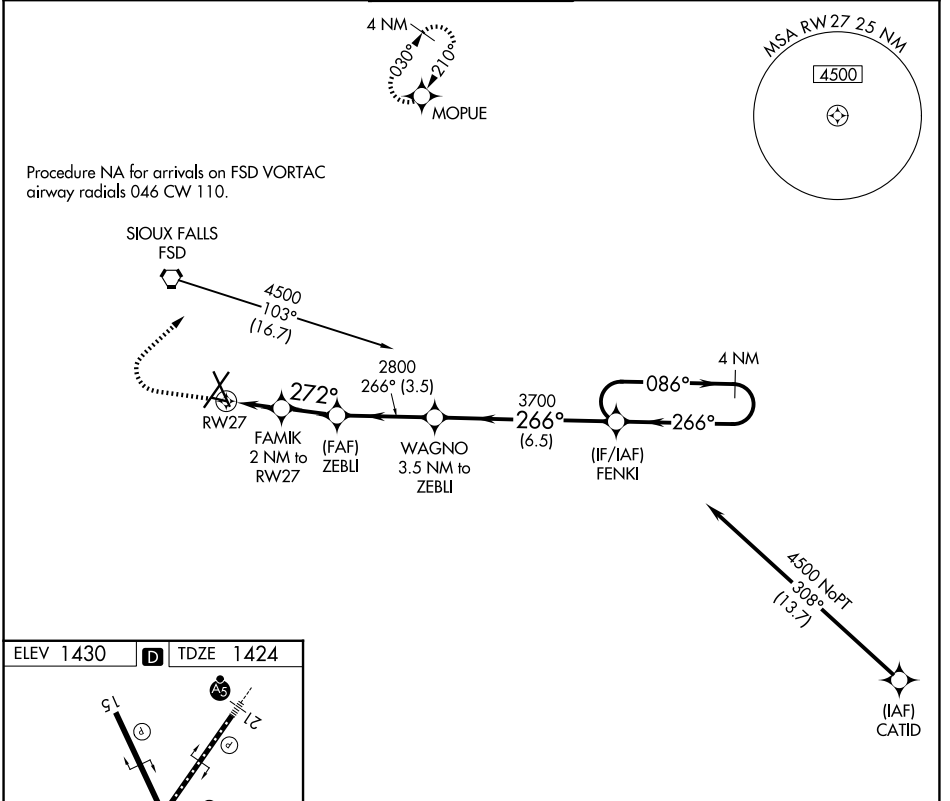
# RNAV (GPS) RWY 27

JOE FOSS FLD (FSD)

RNP APCH.  
 ASR Rwy 27 helicopter visibility reduction below 3/4 SM NA.  
 -30°C

MISSED APPROACH: Climb to 2500, then climbing right turn to 4000 direct MOPIUE WP and hold.

ATIS <b>126.6</b>	SIOUX FALLS APP CON* <b>125.8 284.725</b>	SIOUX FALLS TOWER* <b>118.3 (CTAF) 257.8</b>	GND CON <b>121.9 348.6</b>	UNICOM <b>122.95</b>
----------------------	--	---	-------------------------------	-------------------------



2500	4000	MOPIUE		
FAMIK 2 NM to RW27		ZEBLI	WAGNO 3.5 NM to ZEBLI	FENKI 4 NM Holding Pattern
RW27		272°	266°	086°
2120		2800	3700	4500
2 NM		2 NM	3.5 NM	6.5 NM
CATEGORY	A	B	C	D
LNAV MDA	1960-1	536 (600-1)	NA	
CIRCLING	1960-1	1980-1	NA	
	530 (600-1)	550 (600-1)		

NC-1, 14 MAY 2026 to 11 JUN 2026

NC-1, 14 MAY 2026 to 11 JUN 2026