

WAAS CH <b>40135</b> <b>W33A</b>	APP CRS <b>330°</b>	Rwy Ldg TDZE <b>1424</b> Apt Elev <b>1430</b>	<b>8000</b>
--	------------------------	---	-------------

# RNAV (GPS) RWY 33

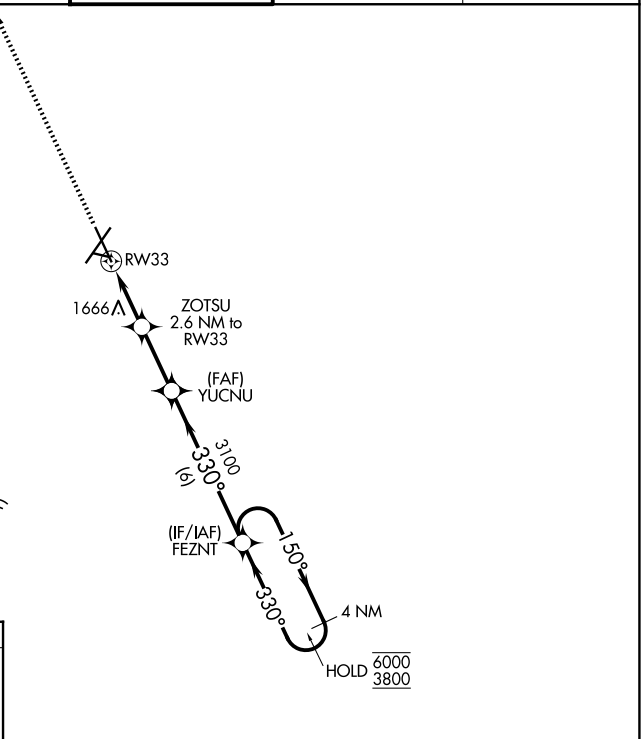
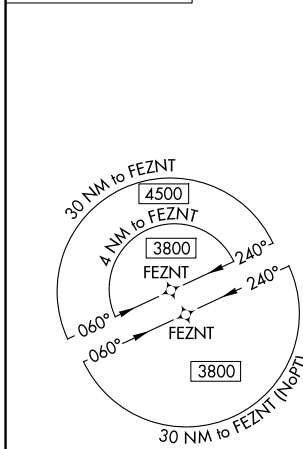
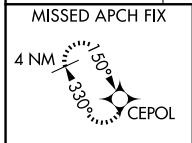
JOE FOSS FLD (FSD)

RNP APCH-GPS.

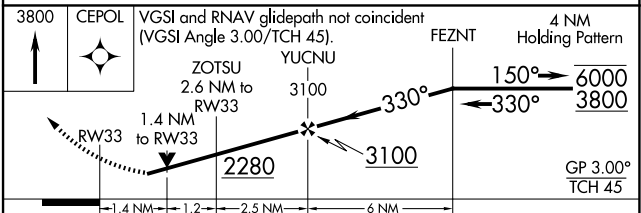
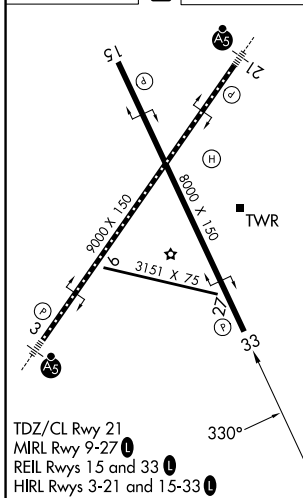
**⚠** Rwy 33 helicopter visibility reduction below  $\frac{3}{4}$  SM NA. For uncompensated Baro-VNAV systems, procedure NA below -22°C or above 54°C.  
**⚠** ASR  
**⚠** -30°C

MISSED APPROACH:  
Climb to 3800 direct CEPOL and hold.

ATIS <b>126.6</b>	SIoux FALLS APP CON* <b>125.8 284.725</b>	SIoux FALLS TOWER* <b>118.3(CTAF) 0 257.8</b>	GND CON <b>121.9 348.6</b>	UNICOM <b>122.95</b>
----------------------	--	--	-------------------------------	-------------------------



ELEV 1430	<b>D</b>	TDZE 1424
-----------	----------	-----------



CATEGORY	A	B	C	D
LPV DA		1729- $\frac{7}{8}$	305 (300- $\frac{7}{8}$ )	
LNAV/VNAV DA		1974-1 $\frac{5}{8}$	550 (600-1 $\frac{5}{8}$ )	
LNAV MDA	1920-1	496 (500-1)	1920-1 $\frac{3}{8}$	496 (500-1 $\frac{3}{8}$ )
CIRCLING	1960-1 530 (600-1)	1980-1 550 (600-1)	2060-1 $\frac{3}{4}$ 630 (700-1 $\frac{3}{4}$ )	2200-2 $\frac{1}{2}$ 770 (800-2 $\frac{1}{2}$ )

NC-1, 14 MAY 2026 to 11 JUN 2026

NC-1, 14 MAY 2026 to 11 JUN 2026