

APP CRS <b>098°</b>	Rwy Ldg TDZE Apt Elev	<b>3151</b> <b>1424</b> <b>1430</b>
------------------------	-----------------------------	---

# RNAV (GPS) RWY 9

JOE FOSS FLD (FSD)

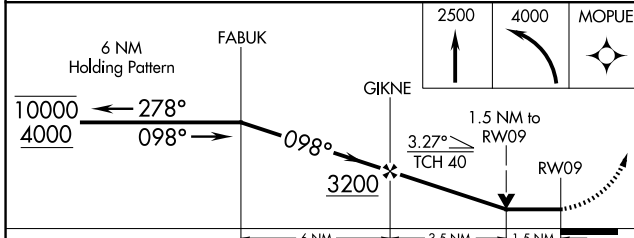
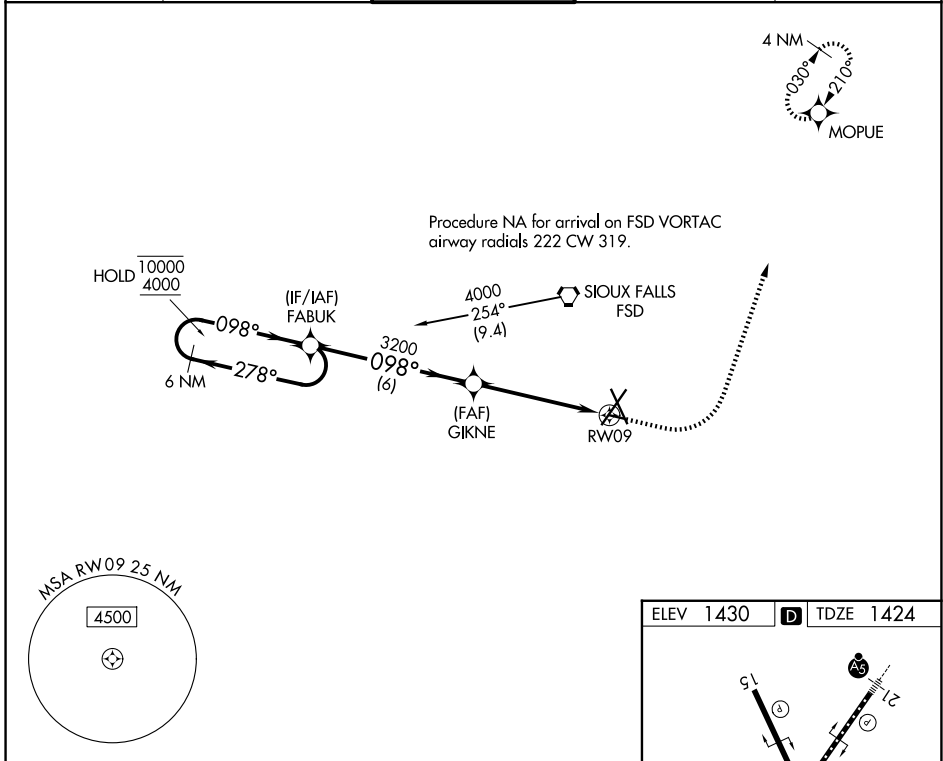
RNP APCH - GPS.

**ASR** Rwy 9 helicopter visibility reduction below 3/4 SM NA.

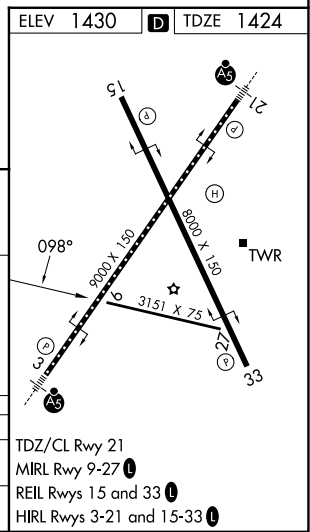
**-30°C**

MISSED APPROACH: Climb to 2500 then climbing left turn to 4000 direct MOPUE and hold.

ATIS <b>126.6</b>	SIoux FALLS APP CON* <b>125.8 284.725</b>	SIoux FALLS TOWER* <b>118.3 (CTAF) 257.8</b>	GND CON <b>121.9 348.6</b>	UNICOM <b>122.95</b>
----------------------	--	---	-------------------------------	-------------------------



CATEGORY	A	B	C	D
LNAV MDA	2000-1	576 (600-1)	NA	
CIRCLING	2000-1	570 (600-1)	NA	



NC-1, 14 MAY 2026 to 11 JUN 2026

NC-1, 14 MAY 2026 to 11 JUN 2026