

VORTAC FSD 115.0 Chan 97	APP CRS 147°	Rwy Ldg 8000 TDZE 1429 Apt Elev 1430
--	------------------------	---

VOR or TACAN RWY 15

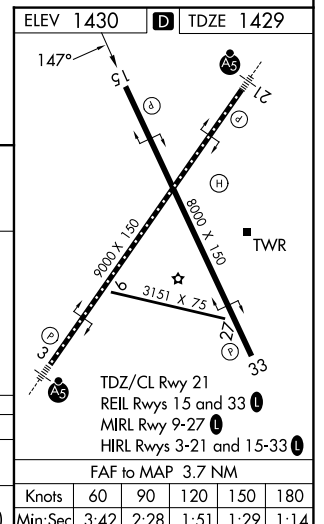
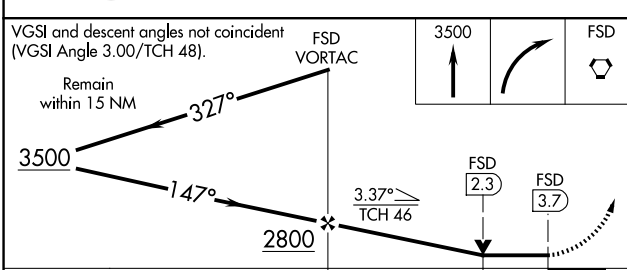
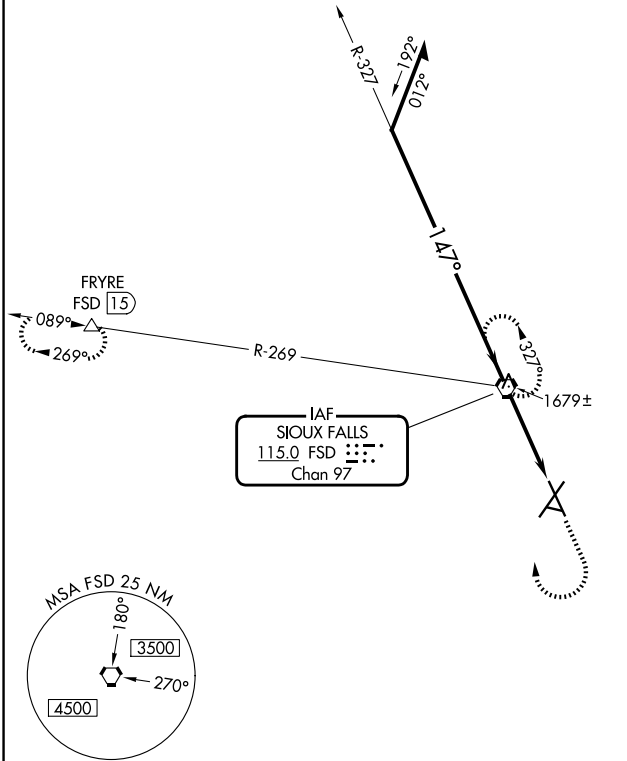
JOE FOSS FLD (FSD)

A Rwy 15 helicopter visibility reduction below ¼ SM NA.

ASR -30°C

MISSED APPROACH: Climb to 3500 then right turn direct FSD VORTAC and hold. (TACAN aircraft continue climb to 5000 via FSD R-269 to FRYRE 15 DME and hold west, right turns, 089° inbound)

ATIS 126.6	SIoux FALLS APP CON* 125.8 284.725	SIoux FALLS TOWER* 118.3(CTAF) 257.8	GND CON 121.9 348.6	UNICOM 122.95
----------------------	--	--	-------------------------------	-------------------------



CATEGORY	A	B	C	D	E	Knots				
S-15	1920-1	491 (500-1)	1920-1 3/8 491 (500-1 3/8)			60	90	120	150	180
CIRCLING	1960-1	1980-1	2060-1 3/4	2200-2 1/2	2300-3	Min:Sec				
	530 (600-1)	550 (600-1)	630 (700-1 3/4)	770 (800-2 1/2)	870 (900-3)	3:42	2:28	1:51	1:29	1:14

NC-1, 14 MAY 2026 to 11 JUN 2026

NC-1, 14 MAY 2026 to 11 JUN 2026