

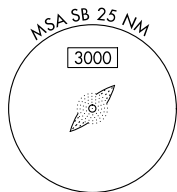
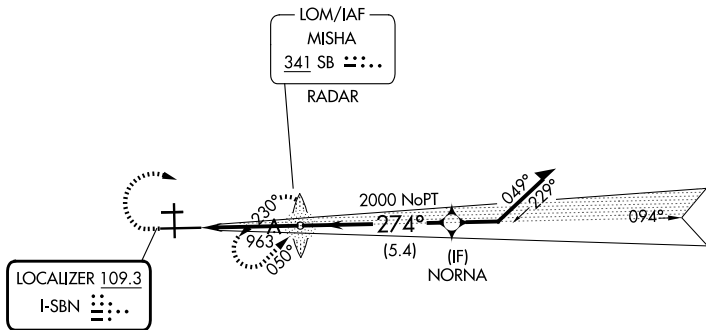
LOC I-SBN 109.3	APP CRS 274°	Rwy Ldg 8412
		TDZE 774
		Apt Elev 798

ILS RWY 27L (SA CAT I & II)

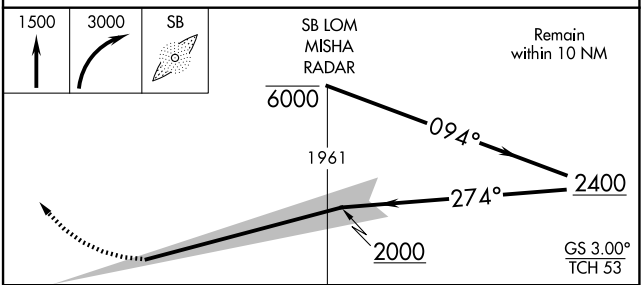
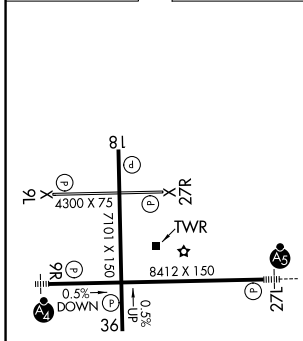
SOUTH BEND INTL (SBN)

RNP APCH - GPS. From NORNA. ADF required.	MALSR 	MISSED APPROACH: Climb to 1500 then climbing right turn to 3000 direct MISHA LOM/RADAR and hold, continue climb-in-hold to 3000.
▼ Procedure NA when tower closed. Requires specific OPSPEC, MSPEC, or LOA approval.	▲	

ATIS 120.675	SOUTH BEND APP CON★ 118.55 257.8	SOUTH BEND TOWER★ 135.675 (CTAF) 0 257.8	GND CON 121.7
------------------------	--	--	-------------------------



ELEV 798	D	TDZE 774
----------	----------	----------



CATEGORY	A	B	C	D
S-ILS 27L		SA CAT I RA 209/14	150 DA 924	
S-ILS 27L		SA CAT II RA 119/12	100 DA 874	

SA CATEGORY I & II ILS - SPECIAL AIRCREW & AIRCRAFT CERTIFICATION REQUIRED

EC-2, 14 MAY 2026 to 11 JUN 2026

EC-2, 14 MAY 2026 to 11 JUN 2026