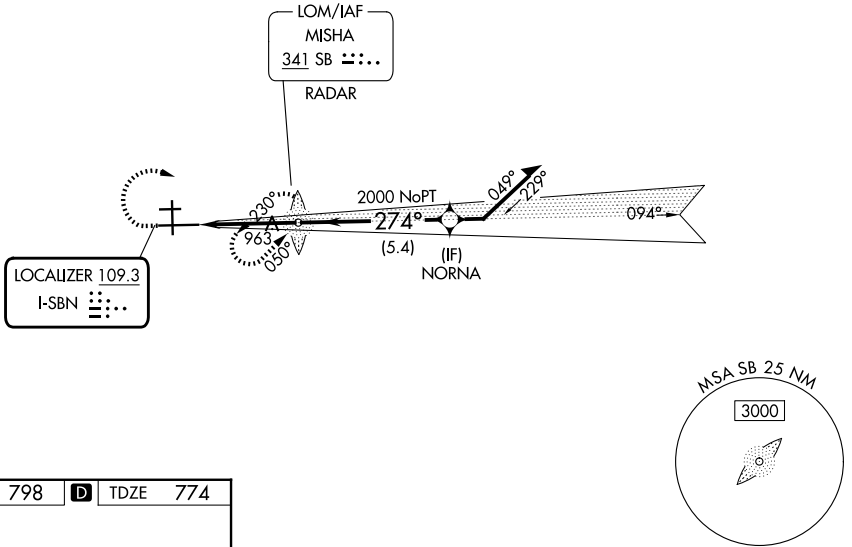


LOC I-SBN <b>109.3</b>	APP CRS <b>274°</b>	Rwy Ldg TDZE Apt Elev	<b>8412</b> <b>774</b> <b>798</b>
---------------------------	------------------------	-----------------------------	---

# ILS or LOC RWY 27L

SOUTH BEND INTL (SBN)

RNP APCH - GPS. From NORNA. ADF required.		MALSR 	MISSED APPROACH: Climb to 1500 then climbing right turn to 3000 direct MISHA LOM/RADAR and hold, continue climb-in-hold to 3000.
⚠ Circling Rwy 27R NA at night. ⚠ *RVR 1800 authorized with use of FD or AP or HUD to DA.			
ATIS <b>120.675</b>	SOUTH BEND APP CON★ <b>118.55 257.8</b>	SOUTH BEND TOWER★ <b>135.675 (CTAF) 0 257.8</b>	GND CON <b>121.7</b>



ELEV	798	<b>D</b>	TDZE	774
------	-----	----------	------	-----

HIRL Rwy 9R-27L **1**  
MIRL Rwy 18-36 **1**  
MIRL Rwy 9L-27R

FAF to MAP 3.6 NM

Knots	60	90	120	150	180
Min:Sec	3:36	2:24	1:48	1:26	1:12

1500 3000 SB 	SB LOM MISHA RADAR	Remain within 10 NM			
		6000 1961 094° 2400 274° 2000 3.6 NM GS 3.00° TCH 53			
CATEGORY	A	B	C	D	
S-ILS 27L *	974/24 200 (200-½)				
S-LOC 27L	1220/24	446 (500-½)	1220/45	446 (500-¾)	
CIRCLING	1280-1	482 (500-1)	1440-1¾ 642 (700-1¾)	1520-2¼ 722 (800-2¼)	