

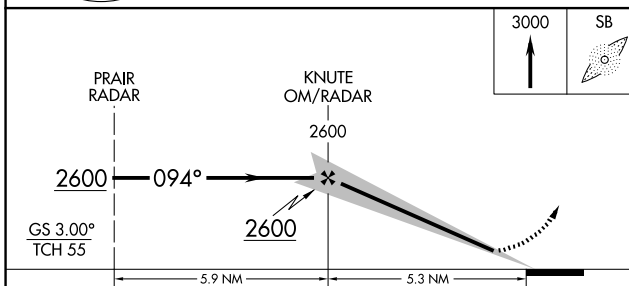
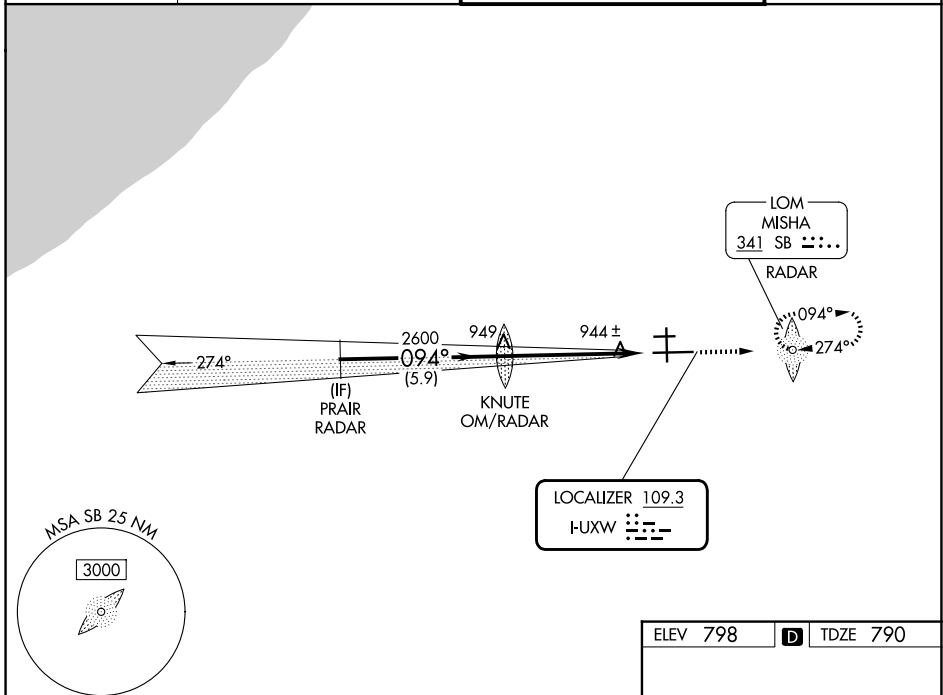
LOC I-UXW 109.3	APP CRS 094°	Rwy Ldg TDZE Apt Elev	8412 790 798
---------------------------	------------------------	-----------------------------	---

ILS or LOC RWY 9R

SOUTH BEND INTL (SBN)

ADF and RADAR required.		MALSF	MISSED APPROACH: Climb to 3000 direct MISHA LOM/RADAR and hold, continue climb-in-hold to 3000.
<p>▼ Rwy 9R helicopter visibility reduction below RVR 4000 NA. For inop ALS, increase S-ILS 9R visibility all Cats to RVR 5500, increase S-LOC 9R Cats C/D visibility to RVR 6000. Circling Rwy 27R NA at night.</p>			

ATIS 120.675	SOUTH BEND APP CON★ 118.55 257.8	SOUTH BEND TOWER★ 135.675 (CTAF) 0 257.8	GND CON 121.7
------------------------	--	--	-------------------------



ELEV 798	TDZE 790
<p>HIRL Rwy 9R-27L MIRL Rwy 18-36 MIRL Rwy 9L-27R</p>	
<p>FAF to MAP 5.3 NM</p>	
Knots	60 90 120 150 180
Min:Sec	5:18 3:32 2:39 2:07 1:46

EC-2, 14 MAY 2026 to 11 JUN 2026

EC-2, 14 MAY 2026 to 11 JUN 2026