

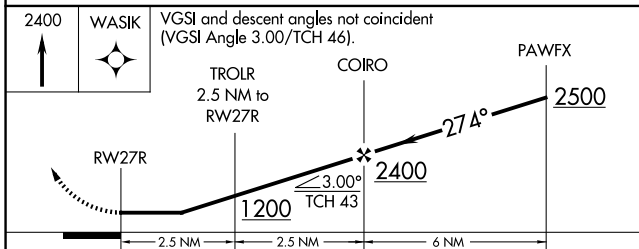
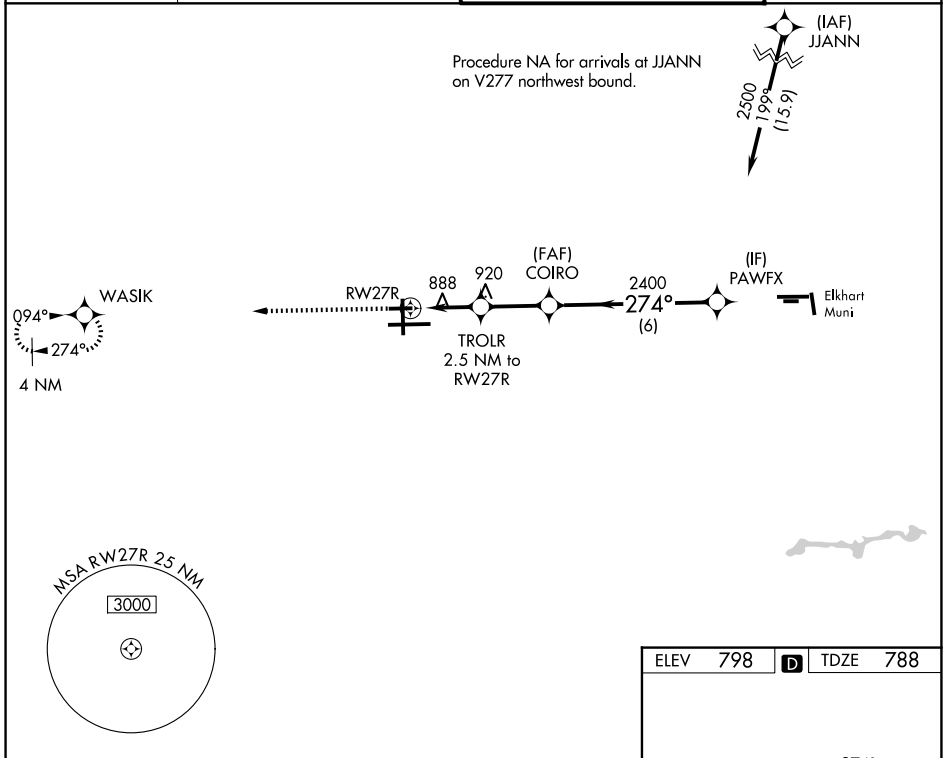
WAAS CH <b>86542</b> <b>W27B</b>	APP CRS <b>274°</b>	Rwy Ldg <b>4300</b> TDZE <b>788</b> Apt Elev <b>798</b>
--	------------------------	---

# RNAV (GPS) RWY 27R

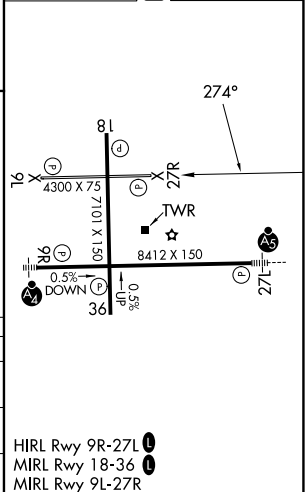
SOUTH BEND INTL (SBN)

RNP APCH - GPS.	MISSED APPROACH: Climb to 2400 direct WASIK and hold.
▼ Rwy 27R helicopter visibility reduction below 1 SM NA. ▲ Procedure NA at night.	

ATIS <b>120.675</b>	SOUTH BEND APP CON★ <b>118.55 257.8</b>	SOUTH BEND TOWER★ <b>135.675 (CTAF) 0 257.8</b>	GND CON <b>121.7</b>
------------------------	--	--	-------------------------



ELEV 798	D	TDZE 788
----------	---	----------



CATEGORY	A	B	C	D
LP MDA	1140-1 352 (400-1)			
LNAV MDA	1180-1	392 (400-1)	1180-1 1/8	392 (400-1 1/8)
CIRCLING	1280-1	482 (500-1)	1440-1 3/4	1520-2 1/4
			642 (700-1 3/4)	722 (800-2 1/4)

EC-2, 14 MAY 2026 to 11 JUN 2026

EC-2, 14 MAY 2026 to 11 JUN 2026