

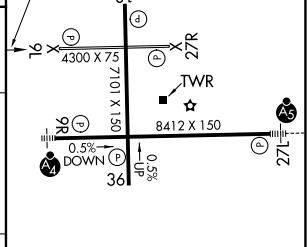
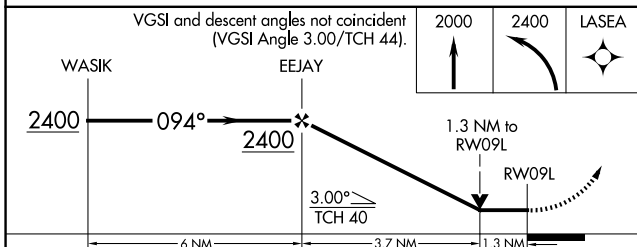
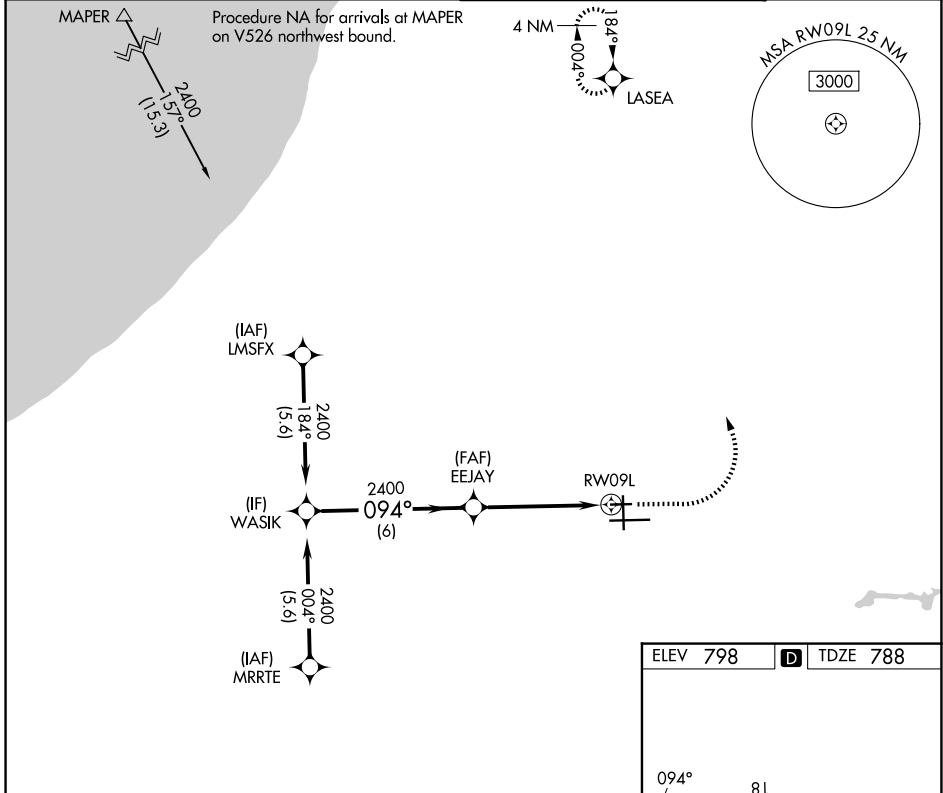
WAAS CH <b>70542</b> <b>W09A</b>	APP CRS <b>094°</b>	Rwy Ldg <b>4300</b> TDZE <b>788</b> Apt Elev <b>798</b>
--	------------------------	---

# RNAV (GPS) RWY 9L

SOUTH BEND INTL (SBN)

RNP APCH - GPS.	MISSED APPROACH: Climb to 2000 then climbing left turn to 2400 direct LASEA and hold.
Rwy 9L helicopter visibility reduction below 3/4 SM NA. Circling Rwy 27R NA at night.	

ATIS <b>120.675</b>	SOUTH BEND APP CON ★ <b>118.55 257.8</b>	SOUTH BEND TOWER ★ <b>135.675 (CTAF) 257.8</b>	GND CON <b>121.7</b>
------------------------	---	---	-------------------------



CATEGORY	A	B	C	D
LP MDA	1240-1	452 (500-1)	1240-1 <sup>3</sup> / <sub>8</sub>	452 (500-1 <sup>3</sup> / <sub>8</sub> )
LNVA MDA	1240-1	452 (500-1)	1240-1 <sup>3</sup> / <sub>8</sub>	452 (500-1 <sup>3</sup> / <sub>8</sub> )
CIRCLING	1280-1	482 (500-1)	1440-1 <sup>3</sup> / <sub>4</sub>	1520-2 <sup>1</sup> / <sub>4</sub>
			642 (700-1 <sup>3</sup> / <sub>4</sub> )	722 (800-2 <sup>1</sup> / <sub>4</sub> )

HIRL Rwy 9R-27L

MIRL Rwy 18-36

MIRL Rwy 9L-27R

EC-2, 14 MAY 2026 to 11 JUN 2026

EC-2, 14 MAY 2026 to 11 JUN 2026