

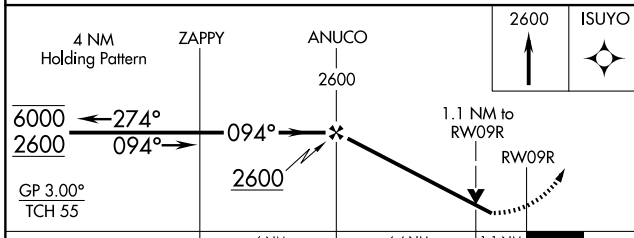
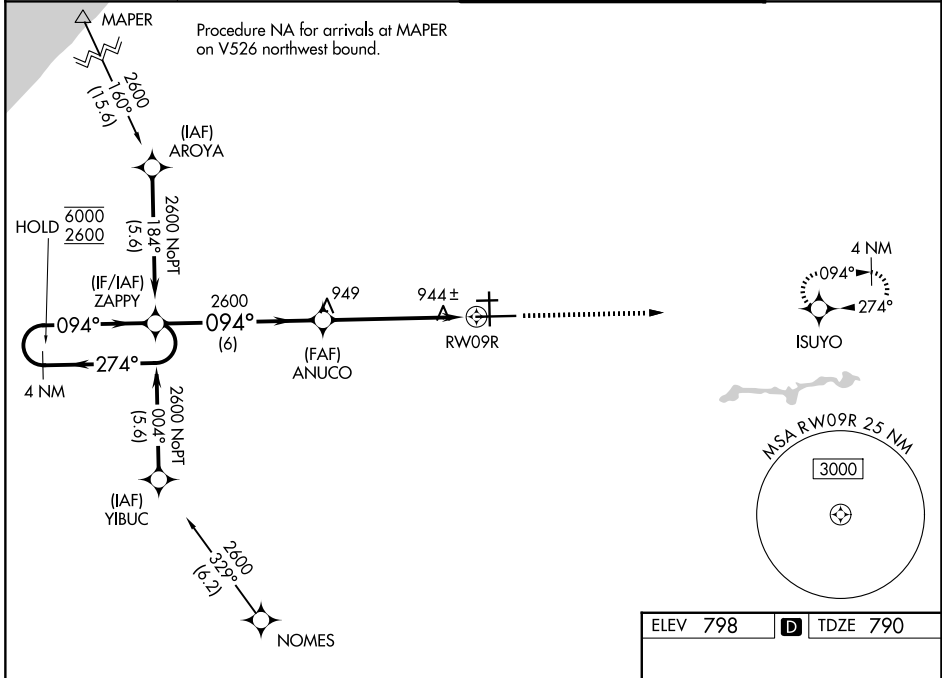
WAAS CH 60908 W09B	APP CRS 094°	Rwy Ldg TDZE Apt Elev	8412 790 798
--	------------------------	-----------------------------	---

RNAV (GPS) RWY 9R

SOUTH BEND INTL (SBN)

RNP APCH - GPS.	MALSF	MISSED APPROACH: Climb to 2600 direct ISUYO and hold.
<p>▼ For uncompensated Baro-VNAV systems, LNAV/VNAV NA below -19°C or above 54°C. Circling Rwy 27R NA at night. Rwy 9R helicopter visibility reduction below RVR 4000 NA.</p> <p>▲ For inop ALS, increase LPV all Cats visibility to RVR 5500; increase LNAV/VNAV all Cats visibility to RVR 6000; increase LNAV Cat C/D to RVR 6000.</p>		

ATIS 120.675	SOUTH BEND APP CON ★ 118.55 257.8	SOUTH BEND TOWER ★ 135.675 (CTAF) 0 257.8	GND CON 121.7
------------------------	---	---	-------------------------



ELEV 798	D TDZE 790
----------	-------------------

CATEGORY	A	B	C	D
LPV DA		1135/40	345 (400-3/4)	
LNAV/VNAV DA		1200/50	410 (500-1)	
LNAV MDA	1200/40	410 (500-3/4)	1200/50	410 (500-1)
CIRCLING	1280-1	482 (500-1)	1440-1 3/4 642 (700-1 3/4)	1520-2 1/4 722 (800-2 1/4)

HIRL Rwy 9R-27L **1**
MIRL Rwy 18-36 **1**
MIRL Rwy 9L-27R **1**

EC-2, 14 MAY 2026 to 11 JUN 2026

EC-2, 14 MAY 2026 to 11 JUN 2026