

FELTS FIVE DEPARTURE

AL-402 (FAA)

FELTS FLD (SFF)
SPOKANE, WASHINGTON

NW-1, 14 MAY 2026 to 11 JUN 2026

DEPARTURE ROUTE DESCRIPTION

TAKEOFF RUNWAYS 4L/R: Climb on heading 038° to 5000. Expect RADAR vectors to assigned airway/route, thence. . . .

TAKEOFF RUNWAYS 22L/R: Climbing left turn heading 190° to 5500. Expect RADAR vectors to assigned airway/route, thence. . . .

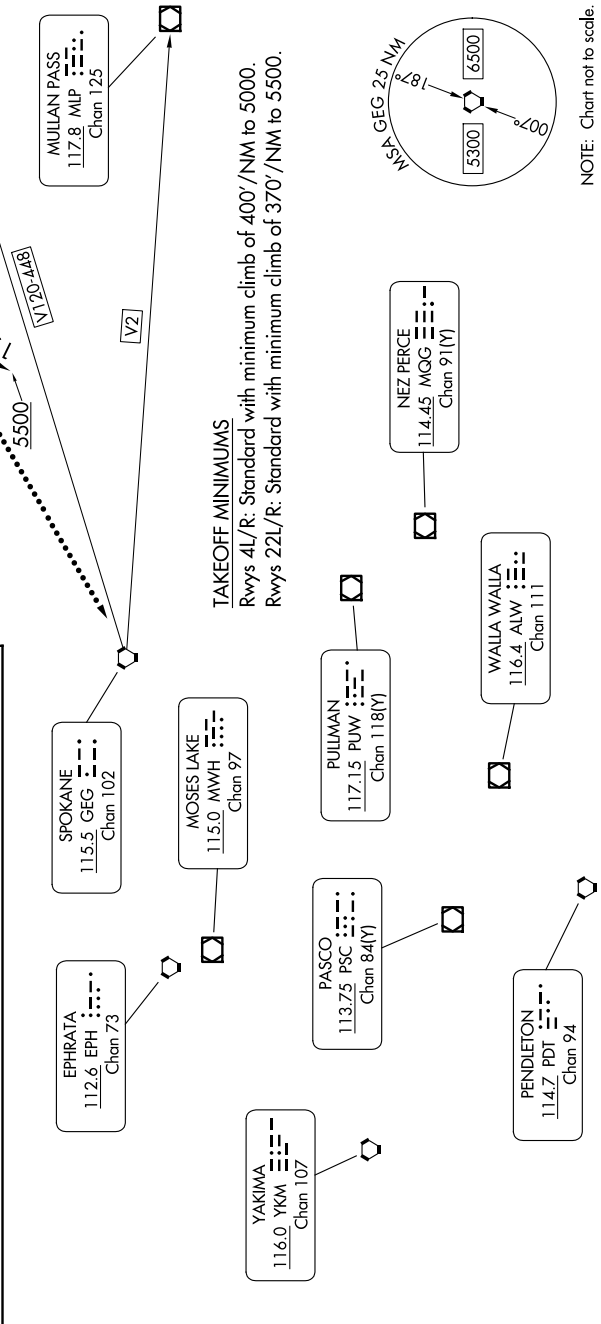
. . . . maintain 12000, expect filed altitude 10 minutes after departure.

LOST COMMUNICATIONS: Climb direct GEG VORTAC before proceeding on course. Cross GEG VORTAC at or above: northeast bound V120-448 and eastbound V2 5200.

TOP ALTITUDE:
12000

RADAR required.

SPOKANE DEP CON
133.35 263.0
ATIS
120.55
GND CON
121.7
FELTS TOWER*
132.5 239.025



NOTE: Chart not to scale.

FELTS FIVE DEPARTURE

SPOKANE, WASHINGTON
FELTS FLD (SFF)

NW-1, 14 MAY 2026 to 11 JUN 2026