

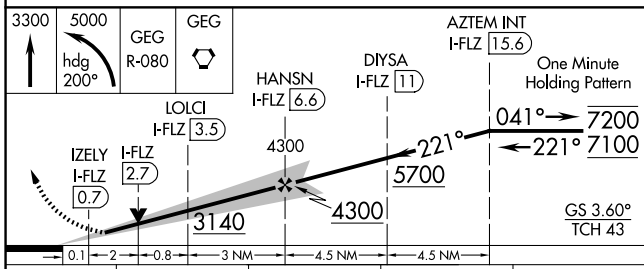
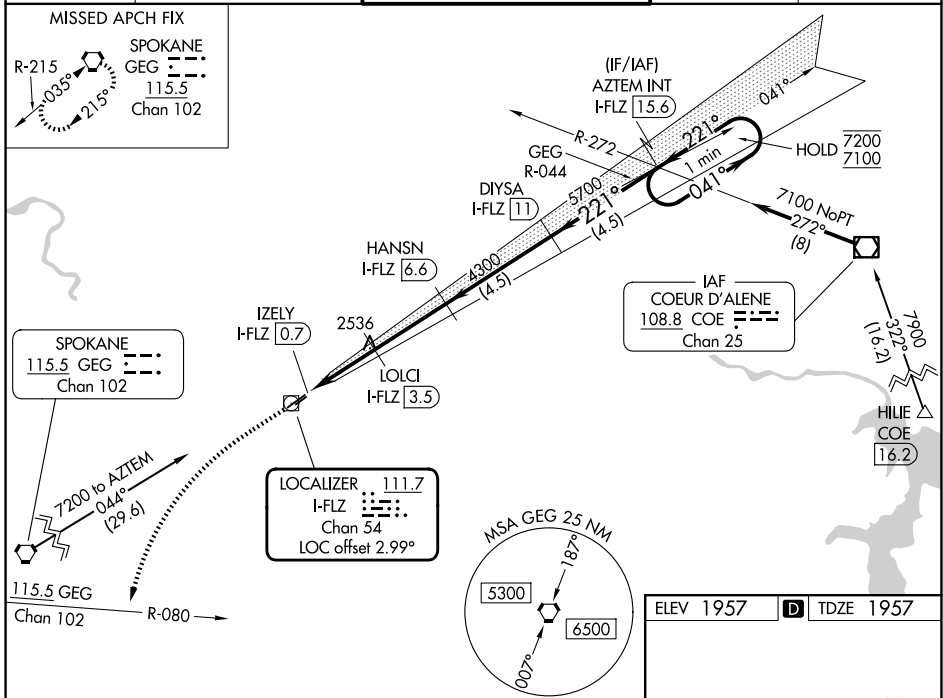
LOC/DME I-FLZ 111.7 Chan 54	APP CRS 221°	Rwy Ldg TDZE 1957 Apt Elev 1957
---	------------------------	---

ILS or LOC RWY 22R

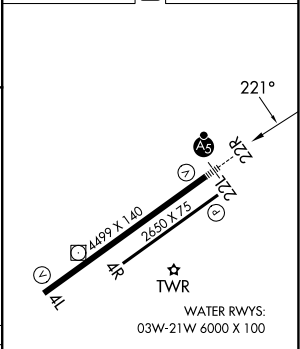
FELTS FLD (S'F'F)

DME required.	MALSR	MISSED APPROACH: Climb to 3300 then climbing left turn to 5000 on heading 200° and GEG VORTAC R-080 to GEG VORTAC and hold.
<p>▼ Circling NA northwest of Rwy 4L-22R. Circling Rwy 22L NA at night.</p> <p>⚠ Rwy 22R helicopter visibility reduction below 3/4 SM NA. For inop ALS, increase S-ILS Cat A/B/C visibility to 7/8 SM, increase S-LOC Cat A visibility to 1 SM and Cat C visibility to 2 1/2 SM.</p> <p>⚡ -15°C</p>		

ATIS 120.55	SPOKANE APP CON 133.35 263.0	FELTS TOWER ★ 132.5 (CTAF) 239.025	GND CON 121.7	UNICOM 122.95
-----------------------	--	--	-------------------------	-------------------------



ELEV 1957	TDZE 1957
-----------	-----------



CATEGORY	A	B	C	D
S-ILS 22R	2257-1/2 300 (300-1/2)			NA
S-LOC 22R	2800-3/4	843 (900-3/4)	2800-1/8 843 (900-1/8)	NA
CIRCLING	2800-1 1/4 843 (900-1 1/4)	2800-1 1/2 843 (900-1 1/2)	3100-3 1143 (1200-3)	NA

REIL Rwy 4L	MIRL Rwy 4L-22R
-------------	-----------------

NW-1, 14 MAY 2026 to 11 JUN 2026

NW-1, 14 MAY 2026 to 11 JUN 2026