

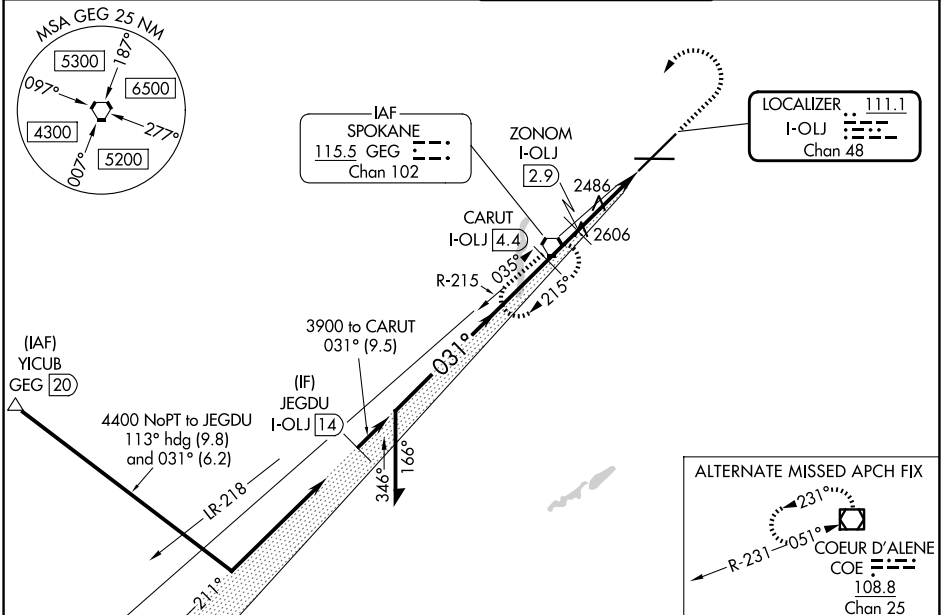
LOC/DME I-OLJ <b>111.1</b> Chan 48	APP CRS <b>031°</b>	Rwy Ldg TDZE Apt Elev	<b>11002</b> <b>2385</b> <b>2385</b>
--	------------------------	-----------------------------	--

# ILS or LOC RWY 3

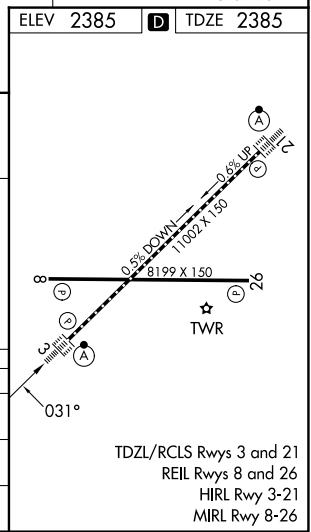
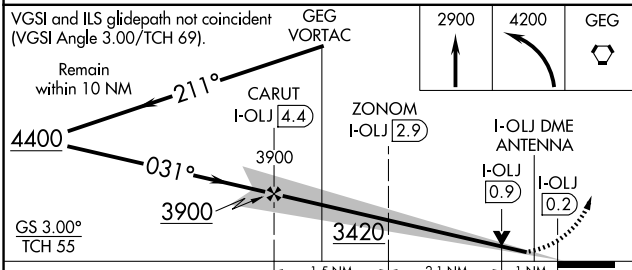
SPOKANE INTL (GEG)

DME required for localizer only.		ALSIF-2 	MISSED APPROACH: Climb to 2900 then climbing left turn to 4200 direct GEG VORTAC and hold, continue climb-in-hold to 4200.
 For inop ALS, increase S-LOC 3 Cat C/D visibility to RVR 5500.			

ATIS <b>124.325 254.375</b>	SPOKANE APP CON <b>123.75 282.25</b> (205°-025°) <b>133.35 263.0</b> (026°-204°)	SPOKANE TOWER <b>118.3 278.3</b>	GND CON <b>121.9 348.6</b>
--------------------------------	--	-------------------------------------	-------------------------------



ELEV 2385	TDZE 2385
-----------	-----------



CATEGORY	A	B	C	D
S-ILS 3	2585/18 200 (200-½)			
S-LOC 3	2780/24	395 (400-½)	2780/35	395 (400-¾)
CIRCLING	2960-1 575 (600-1)	2980-1 595 (600-1)	3180-2¼ 795 (800-2¼)	3380-3 995 (1000-3)

NW-1, 14 MAY 2026 to 11 JUN 2026

NW-1, 14 MAY 2026 to 11 JUN 2026