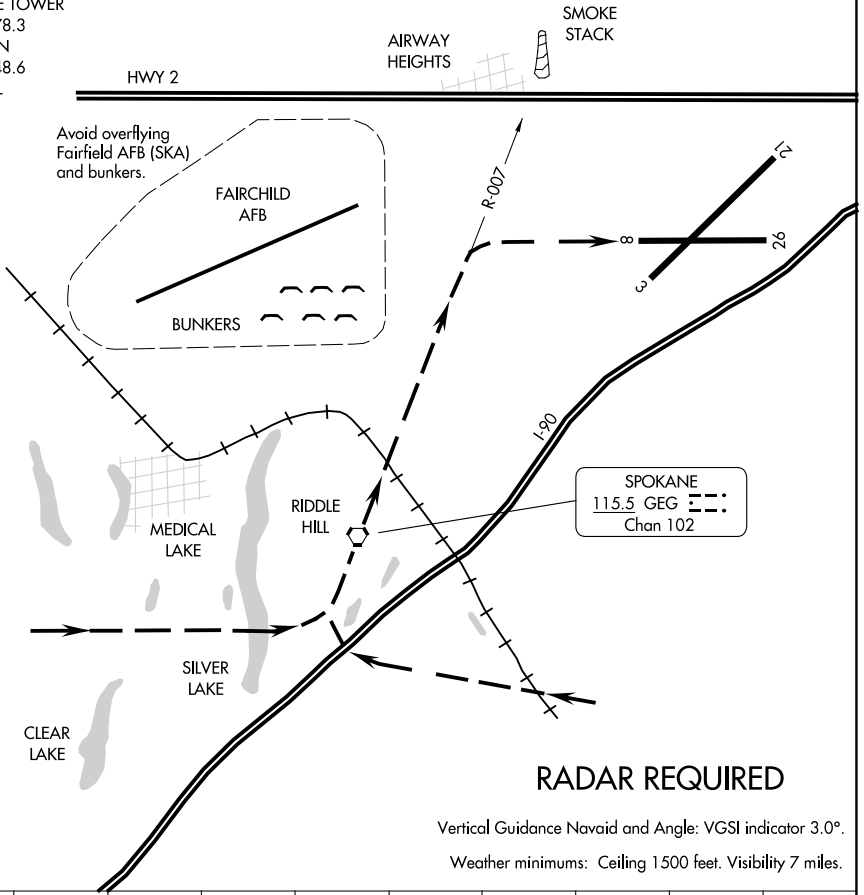


RIDDLE HILL VISUAL RWY 8

AL-403 (FAA)

SPOKANE INTL (GEG)
SPOKANE, WASHINGTON

ATIS
 124.325 254.375
 SPOKANE APP CON
 123.75 282.25 (205°-025°)
 133.35 263.0 (026°-204°)
 SPOKANE TOWER
 118.3 278.3
 GND CON
 121.9 348.6
 CLNC DEL
 127.55



NW-1, 14 MAY 2026 to 11 JUN 2026

NW-1, 14 MAY 2026 to 11 JUN 2026

1 NM	2	3	4	5	6	7	8	9
------	---	---	---	---	---	---	---	---

RIDDLE HILL VISUAL APPROACH RWY 8

PROCEDURE NOT AUTHORIZED AT NIGHT.

Arrivals expect to be vectored south of the VOR to execute approach.

RIDDLE HILL VISUAL RWY 8

Amdt 1A 15JUN23

47°37'N-117°32'W

SPOKANE, WASHINGTON
SPOKANE INTL (GEG)