

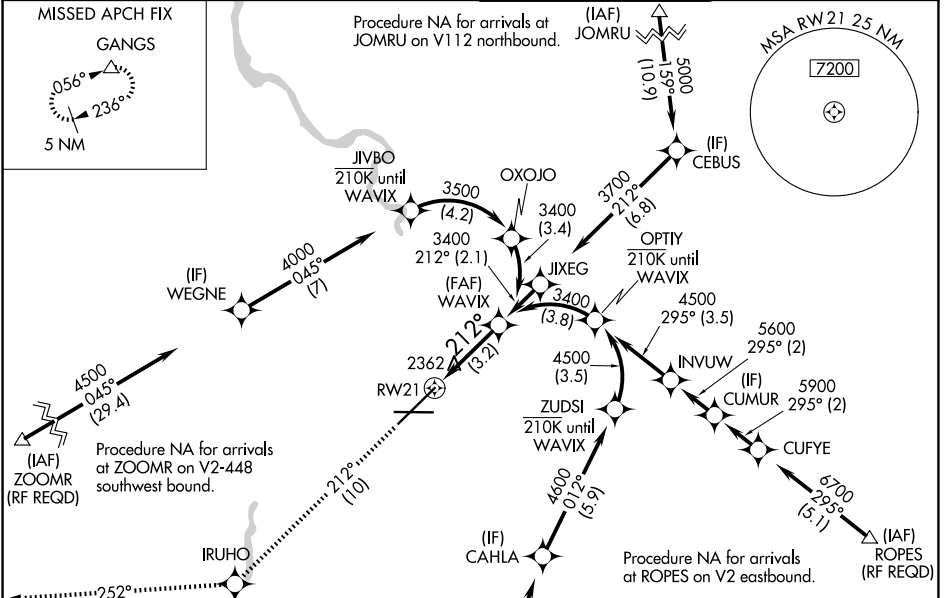
APP CRS	Rwy Ldg	11002
212°	TDZE	2346
	Apt Elev	2385

RNAV (RNP) Z RWY 21

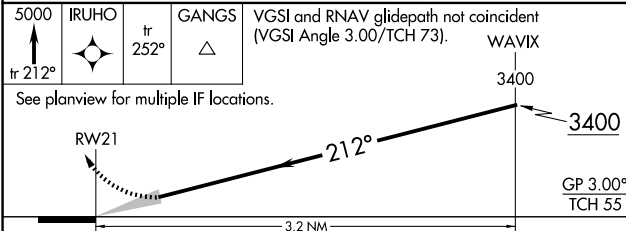
SPOKANE INTL (GEG)

RNP AR APCH.	ALSF-2	MISSED APPROACH: Climb to 5000 on track 212° to IRUHO and on track 252° to GANGS and hold.
▼ For uncompensated Baro-VNAV systems, procedure NA below -19°C or above 43°C. For inop ALS increase RNP 0.11 visibility all Cats to ¾, RNP 0.15 visibility all Cats to 1½ and RNP 0.30 visibility all Cats to 1¾.		*Missed approach requires minimum climb of 310 feet per NM to 3000.

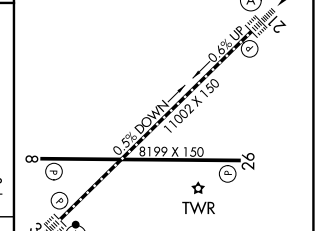
ATIS 124.325 254.375	SPOKANE APP CON 123.75 282.25 (205°-025°) 133.35 263.0 (026°-204°)	SPOKANE TOWER 118.3 278.3	GND CON 121.9 348.6
--------------------------------	--	-------------------------------------	-------------------------------



5000	IRUHO	GANGS	VGSI and RNAV glidepath not coincident (VGSI Angle 3.00/TCH 73).
tr 212°		tr 252°	WAVIX
			3400



ELEV 2385	D TDZE 2346
-----------	--------------------



CATEGORY	A	B	C	D
RNP 0.11 DA*		2596/24	250 (300-½)	
RNP 0.15 DA		2699/30	353 (400-¾)	
RNP 0.30 DA		2752/45	406 (400-¾)	

TDZL/RCLS Rwy 3 and 21
REIL Rwy 8 and 26
HIRL Rwy 3-21
MIRL Rwy 8-26

AUTHORIZATION REQUIRED

NW-1, 14 MAY 2026 to 11 JUN 2026

NW-1, 14 MAY 2026 to 11 JUN 2026