

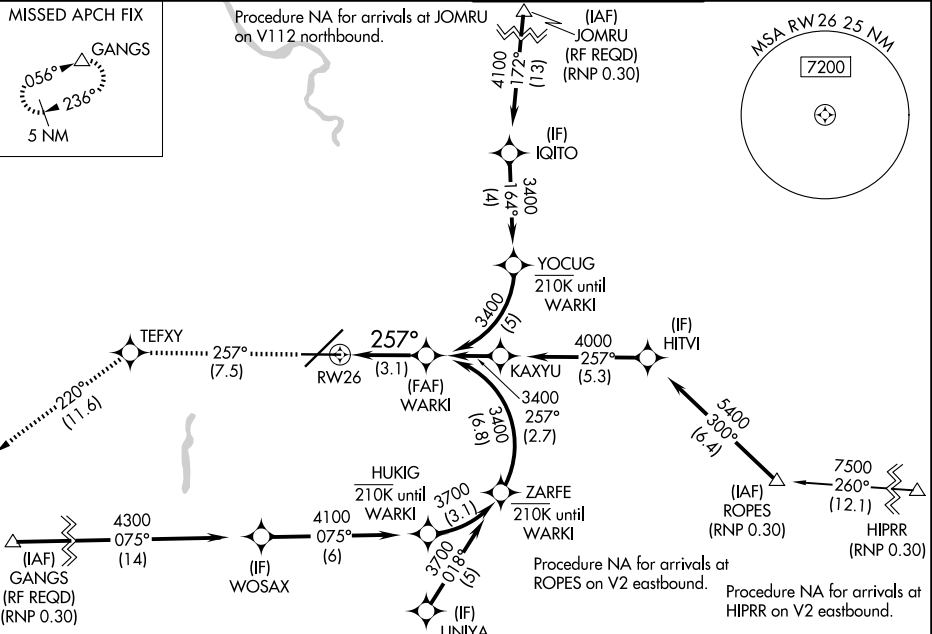
APP CRS	Rwy Ldg	8199
257°	TDZE	2372
	Apt Elev	2385

RNAV (RNP) Z RWY 26

SPOKANE INTL (GEG)

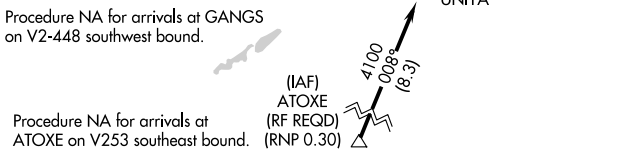
RNP AR APCH.	MISSED APPROACH: Climb to 5000 on track 257° to TEFXY and on track 220° to GANGS and hold.
▼ For uncompensated Baro-VNAV systems, procedure NA below -17°C or above 54°C.	

ATIS 124.325 254.375	SPOKANE APP CON 123.75 282.25 (205°-025°) 133.35 263.0 (026°-204°)	SPOKANE TOWER 118.3 278.3	GND CON 121.9 348.6
--------------------------------	--	-------------------------------------	-------------------------------

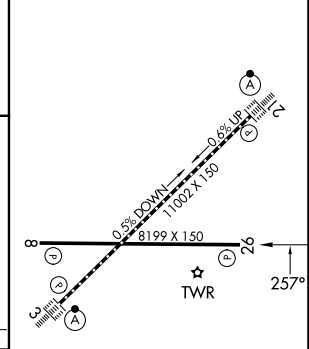


NW-1, 14 MAY 2026 to 11 JUN 2026

NW-1, 14 MAY 2026 to 11 JUN 2026



ELEV 2385	D TDZE 2372
-----------	--------------------



5000	TEFXY	tr 220°	GANGS	WARKI
tr 257°				3400
				3400
				3400

CATEGORY	A	B	C	D
RNP 0.11 DA		2745-1¼	373 (400-1¼)	
RNP 0.30 DA		2795-1¾	423 (500-1¾)	

AUTHORIZATION REQUIRED

TDZL/RCLS Rwy 3 and 21
REIL Rwy 8 and 26
HIRL Rwy 3-21
MIRL Rwy 8-26