

WAAS CH <b>81920</b> <b>W03A</b>	APP CRS <b>031°</b>	Rwy Ldg TDZE Apt Elev	<b>11002</b> <b>2385</b> <b>2385</b>
--	------------------------	-----------------------------	--

# RNAV (GPS) Y RWY 3

SPOKANE INTL (GEG)

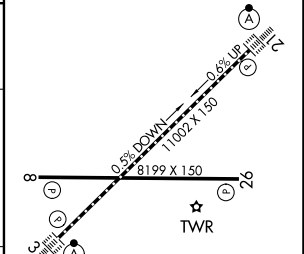
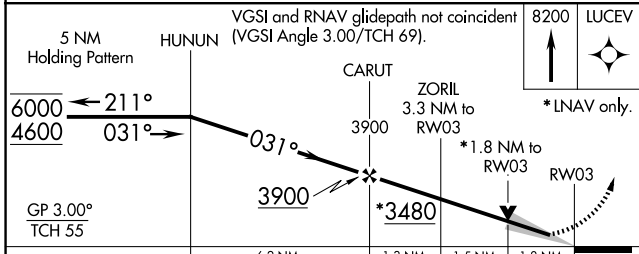
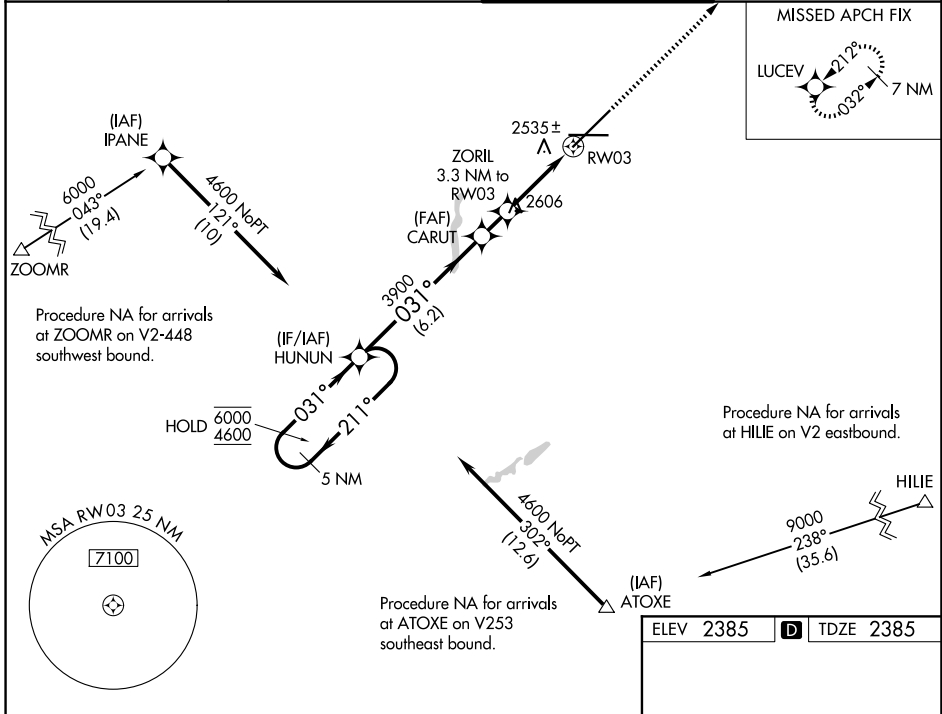
RNP APCH.

⚠ For uncompensated Baro-VNAV systems, LNAV/VNAV NA below -18°C or above 53°C. For inop ALS increase LNAV/VNAV all Cats visibility to 1½ SM and increase LNAV Cats C and D visibility to 1¼ SM.

ALSF-2

MISSED APPROACH: Climb to 8200 direct LUCEV and hold, continue climb-in-hold to 8200.

ATIS <b>124.325 254.375</b>	SPOKANE APP CON <b>123.75 282.25</b> (205°-025°) <b>133.35 263.0</b> (026°-204°)	SPOKANE TOWER <b>118.3 278.3</b>	GND CON <b>121.9 348.6</b>
--------------------------------	--	-------------------------------------	-------------------------------



CATEGORY	A	B	C	D
LPV DA	2585/18		200 (200-½)	
LNAV/VNAV DA	2962-1½		577 (600-½)	
LNAV MDA	3020/24	635 (700-½)	3020/60 635 (700-1¼)	3020-1½ 635 (700-1½)

TDZL/RCLS Rwy 3 and 21

REIL Rwy 8 and 26

HIRL Rwy 3-21

MIRL Rwy 8-26

NW-1, 14 MAY 2026 to 11 JUN 2026

NW-1, 14 MAY 2026 to 11 JUN 2026