

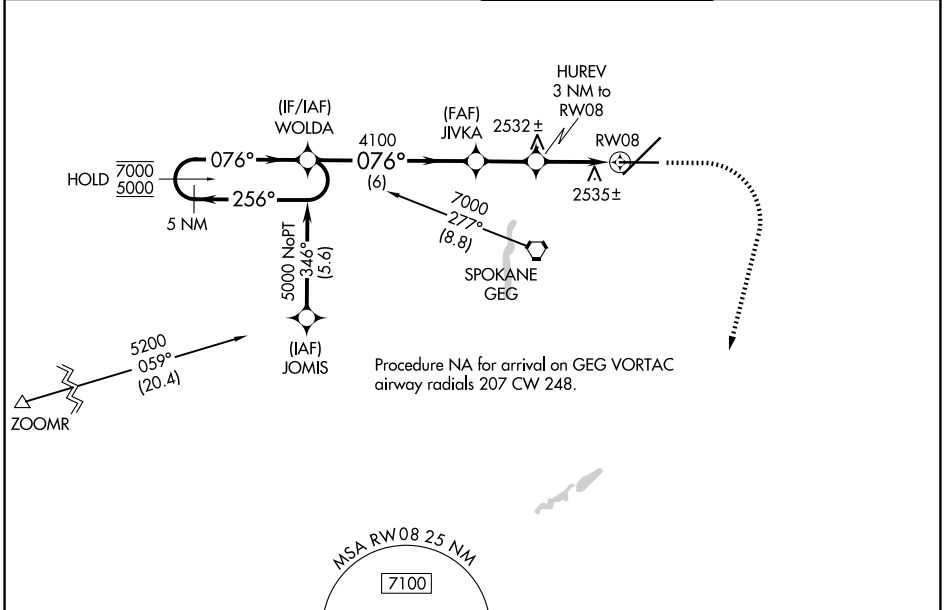
WAAS CH 48801 W08A	APP CRS 076°	Rwy Ldg TDZE Apt Elev	8199 2376 2385
--	------------------------	-----------------------------	---

RNAV (GPS) Y RWY 8

SPOKANE INTL (GEG)

RNP APCH.	MISSED APPROACH: Climb to 2900, then climbing right turn to 6000 direct ATOXE and hold.
For uncompensated Baro-VNAV systems, LNAV/VNAV NA below -18°C or above 52°C.	

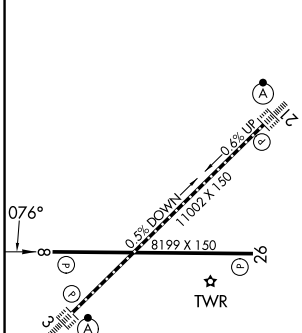
ATIS 124.325 254.375	SPOKANE APP CON 123.75 282.25 (205°-025°) 133.35 263.0 (026°-204°)	SPOKANE TOWER 118.3 278.3	GND CON 121.9 348.6
--------------------------------	--	-------------------------------------	-------------------------------



NW-1, 14 MAY 2026 to 11 JUN 2026

NW-1, 14 MAY 2026 to 11 JUN 2026

ELEV 2385	D	TDZE 2376
-----------	----------	-----------



TDZL/RCLS Rwy 3 and 21 REIL Rwy 8 and 26 HIRL Rwy 3-21 MIRL Rwy 8-26

5 NM Holding Pattern WOLDA				VGS1 and RNAV glidepath not coincident (VGS1 Angle 3.00/TCH 45).				2900	6000	ATOXE
7000 ← 256° 5000 → 076°				4100 → 076°				HUREV 3 NM to RWY 08	1.2 NM to RWY 08	RWY 08
GP 3.00° TCH 40				4100				3400		
				6 NM		2.1 NM		1.8 NM		1.2
CATEGORY	A	B	C	D						
LPV DA	2576-¾				200 (200-¾)					
LNAV/VNAV DA	2834-1½				458 (500-1½)					
LNAV MDA	2800-1		424 (500-1)		2800-1¼		424 (500-1¼)			