

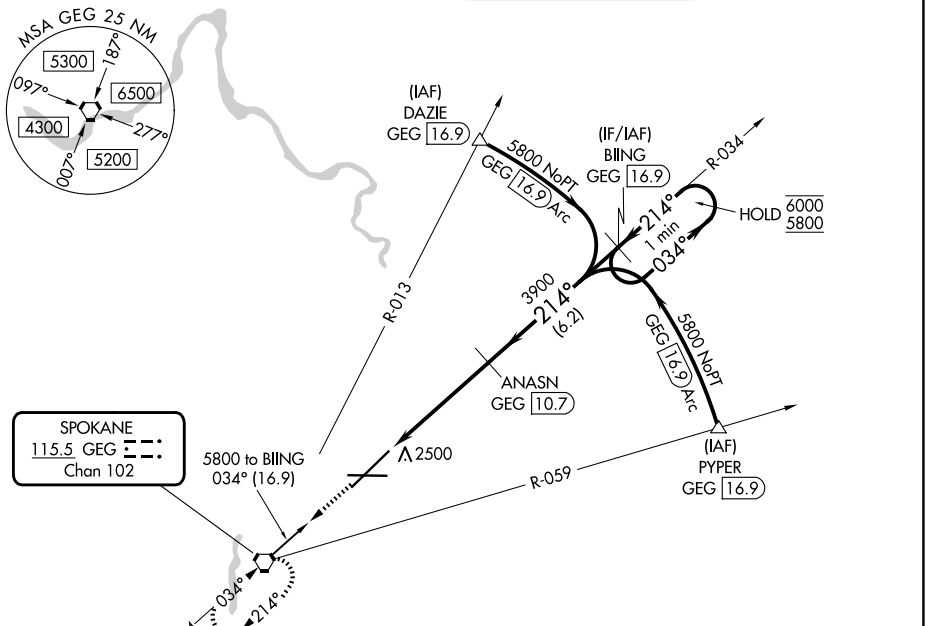
VORTAC GEG <b>115.5</b> Chan <b>102</b>	APP CRS <b>214°</b>	Rwy Ldg TDZE Apt Elev	<b>11002</b> <b>2346</b> <b>2385</b>
---	------------------------	-----------------------------	--

# VOR RWY 21

SPOKANE INTL (GEG)

DME required.		ALSF-2	MISSED APPROACH: Climb to 4200 direct GEG VORTAC and hold, continue climb-in-hold to 4200.
---------------	--	--------	--

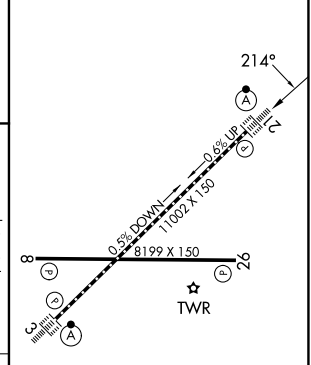
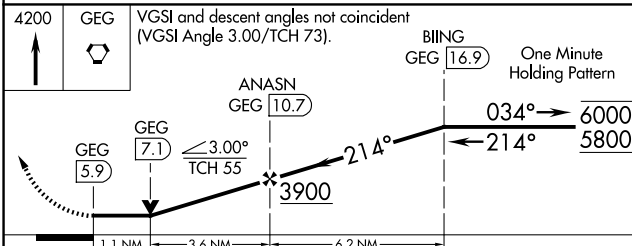
ATIS <b>124.325 254.375</b>	SPOKANE APP CON <b>123.75 282.25</b> (205°-025°) <b>133.35 263.0</b> (026°-204°)	SPOKANE TOWER <b>118.3 278.3</b>	GND CON <b>121.9 348.6</b>
--------------------------------	--	-------------------------------------	-------------------------------



SPOKANE  
115.5 GEG ---  
Chan 102

ELEV 2385 **D** TDZE 2346

4200 GEG VGSI and descent angles not coincident (VGSI Angle 3.00/TCH 73).  
One Minute Holding Pattern



CATEGORY	A	B	C	D
S-21	2760/24	414 (400-½)	2760/40	414 (400-¾)
CIRCLING	2960-1 575 (600-1)	2980-1 595 (600-1)	3180-2¼ 795 (800-2¼)	3380-3 995 (1000-3)

TDZL/RCLS Rwy 3 and 21  
REIL Rwy 8 and 26  
HIRL Rwy 3-21  
MIRL Rwy 8-26

NW-1, 14 MAY 2026 to 11 JUN 2026

NW-1, 14 MAY 2026 to 11 JUN 2026