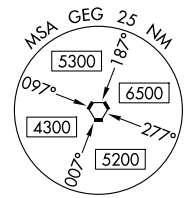
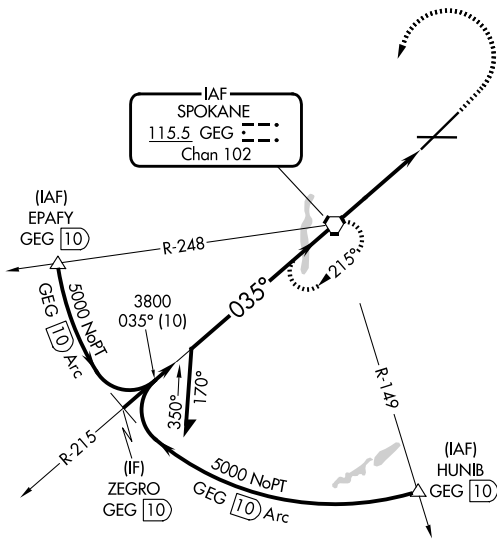


VORTAC GEG 115.5 Chan 102	APP CRS 035°	Rwy Ldg 11002 TDZE 2385 Aprt Elev 2385
--	------------------------	---

VOR RWY 3

SPOKANE INTL (GEG)

Circling NA for Cat E southeast of Rwy 3-21. For inop ALS, increase S-3 Cat E visibility to 1 1/4 SM.		MISSED APPROACH: Climb to 3200 then climbing left turn to 4200 direct GEG VORTAC and hold, continue climb-in-hold to 4200.	
		ATIS 124.325 254.375	SPOKANE APP CON 123.75 282.25 (205°-025°) 133.35 263.0 (026°-204°)



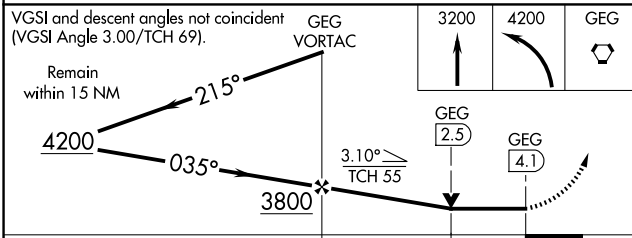
NW-1, 14 MAY 2026 to 11 JUN 2026

NW-1, 14 MAY 2026 to 11 JUN 2026

ELEV 2385	D	TDZE 2385
-----------	----------	-----------

TDZL/RCLS Rwy 3 and 21
 REIL Rwy 8 and 26
 HIRL Rwy 3-21
 MIRL Rwy 8-26

FAF to MAP 4.1 NM					
Knots	60	90	120	150	180
Min:Sec	4:06	2:44	2:03	1:38	1:22



CATEGORY	A	B	C	D	E
S-3	2980/24	595 (600-1/2)	2980-1 1/4	595 (600-1 1/4)	
CIRCLING	2980-1	595 (600-1)	3180-2 1/4 795 (800-2 1/4)	3380-3	995 (1000-3)