

ZOOMR TWO ARRIVAL

AL-403 (FAA)

SPOKANE, WASHINGTON

NW-1, 14 MAY 2026 to 11 JUN 2026

ARRIVAL ROUTE DESCRIPTION

EPHRATA TRANSITION (EPH.ZOOMR2): From over EPH VORTAC on EPH R-065 to ZOOMR. Thence, . . .

MOSES LAKE TRANSITION (MWH.ZOOMR2): From over MWH VOR/DME on MWH R-054 to ZOOMR. Thence, . . .

. . . From over ZOOMR on SPOKANE VORTAC (GEG) R-239 to GANGS. Expect RADAR vectors to final approach course.

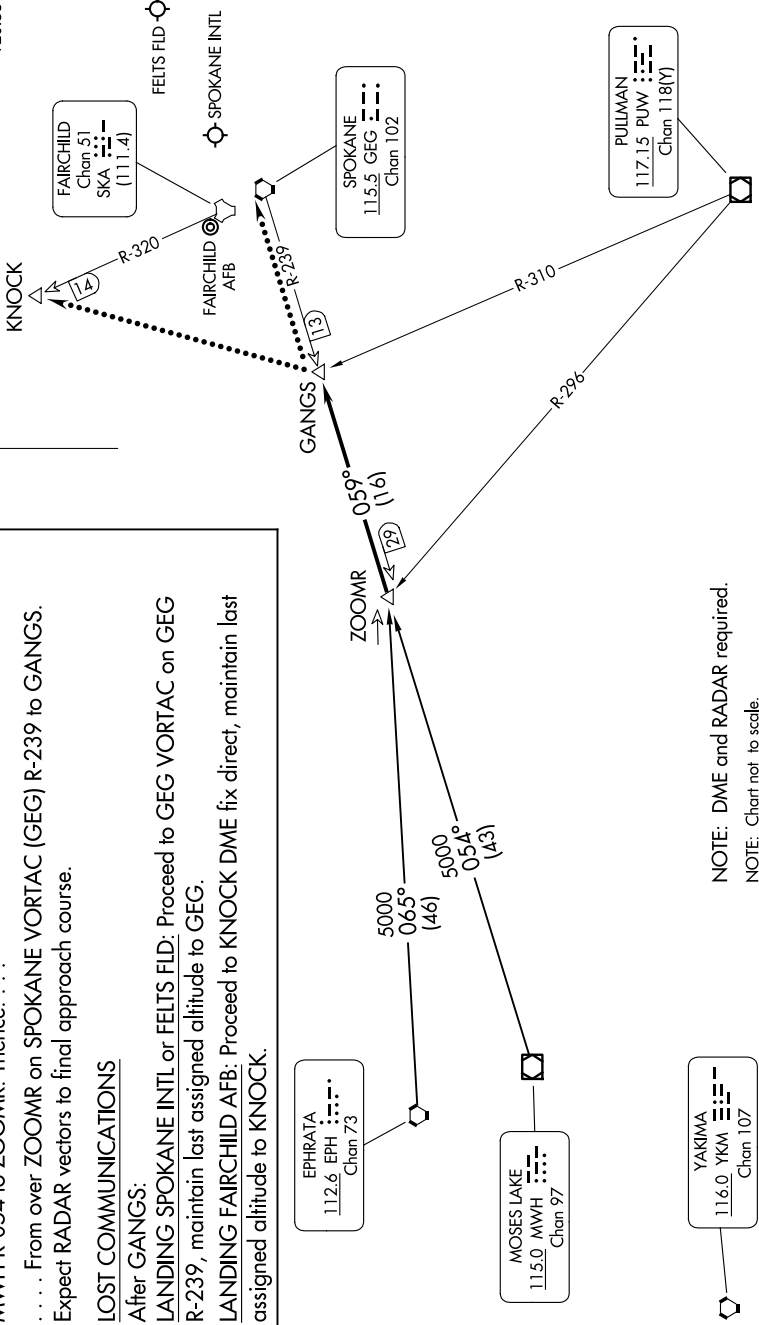
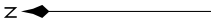
LOST COMMUNICATIONS

After GANGS:

LANDING SPOKANE INTL or FELTS FLD: Proceed to GEG VORTAC on GEG R-239, maintain last assigned altitude to GEG.

LANDING FAIRCHILD AFB: Proceed to KNOCK DME fix direct, maintain last assigned altitude to KNOCK.

SPOKANE APP CON
123.75 282.25
GEG ATIS
124.325 254.375
KSKA ATIS
257.625
SFF ATIS
120.55



NOTE: DME and RADAR required.
NOTE: Chart not to scale.

ZOOMR TWO ARRIVAL

SPOKANE, WASHINGTON

NW-1, 14 MAY 2026 to 11 JUN 2026