

LOC/DME I-SCK 109.1 Chan 28	APP CRS 294°	Rwy Ldg TDZE Apt Elev	8650 32 33
--	------------------------	-----------------------------	---------------------------------------

ILS RWY 29R (SA CAT II)

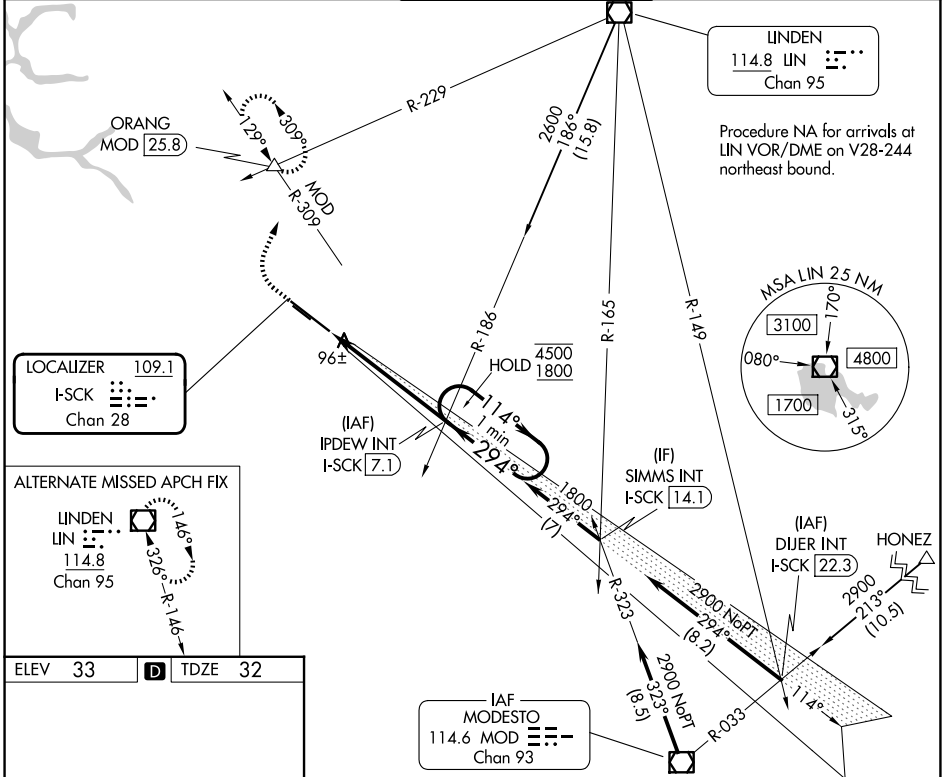
STOCKTON METRO (SCK)

Reduced lighting: requires specific OPSPEC, MSPEC, or LOA approval and use of autoland or HUD to touchdown. Procedure NA when tower closed.

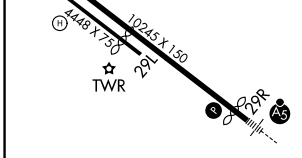
MALS 




MISSED APPROACH: Climb to 500 then climbing right turn to 2000 on heading 010° and MOD VOR/DME R-309 to ORANG INT/MOD 25.8 DME and hold.

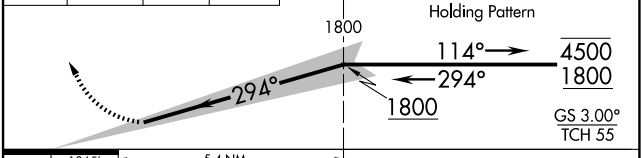
ATIS 118.25	NORCAL APP CON 123.85 278.3 (SE-NW) 125.1 363.2 (N-SE)	STOCKTON TOWER ★ 120.3 (CTAF) 0 239.0	GND CON 121.9	UNICOM 122.95
-----------------------	--	--	-------------------------	-------------------------



ELEV 33	D	TDZE 32
---------	----------	---------



500	2000	MOD R-309	ORANG	VGSI and ILS glidepath not coincident (VGSI Angle 3.00/TCH 71).
		hdg 010°		



CATEGORY	A	B	C	D
S-ILS 29R	RA 105/12 100 DA 132			

SA CATEGORY II ILS - SPECIAL AIRCREW & AIRCRAFT CERTIFICATION REQUIRED

SW-2, 14 MAY 2026 to 11 JUN 2026

SW-2, 14 MAY 2026 to 11 JUN 2026