

# ILS or LOC RWY 29R

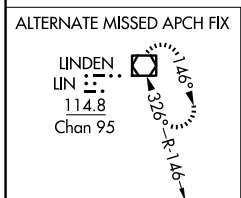
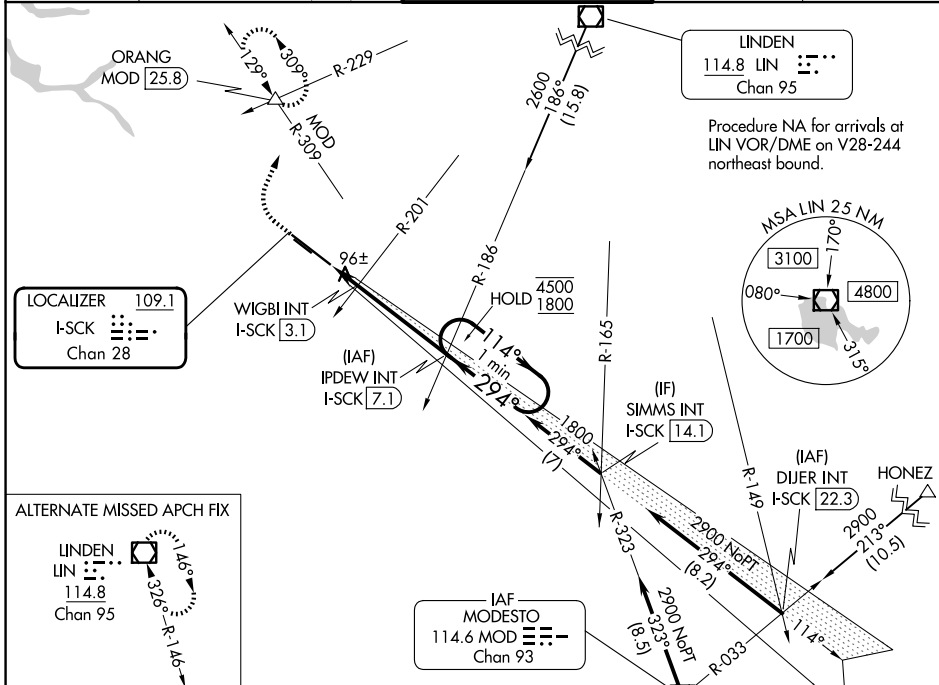
STOCKTON METRO (SCK)

LOC/DME I-SCK <b>109.1</b> Chan 28	APP CRS <b>294°</b>	Rwy Ldg TDZE Apt Elev	<b>8650</b> <b>32</b> <b>33</b>
--	------------------------	-----------------------------	---------------------------------------

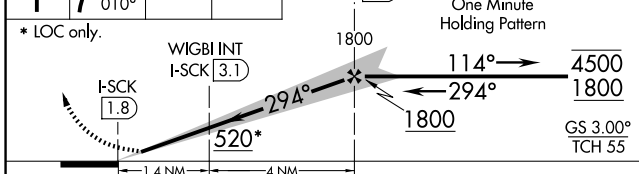
**⚠** For inop ALS, increase S-LOC 29R Cat C/D visibility to 1 3/8 SM.  
**⚠** #RVR 1800 authorized with use of FD or AP or HUD to DA.

**MALS** MISSED APPROACH: Climb to 500 then climbing right turn to 2000 on heading 010° and MOD VOR/DME R-309 to ORANG INT/MOD 25.8 DME and hold.

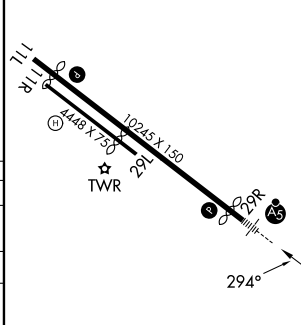
ATIS <b>118.25</b>	NORCAL APP CON <b>123.85 278.3</b> (SE-NW) <b>125.1 363.2</b> (N-SE)	STOCKTON TOWER ★ <b>120.3</b> (CTAF) <b>0 239.0</b>	GND CON <b>121.9</b>	UNICOM <b>122.95</b>
-----------------------	--	--	-------------------------	-------------------------



500	2000	ORANG	VGSI and ILS glidepath not coincident (VGSI Angle 3.00/TCH 71).
	hdg 010°	MOD R-309	IPDEW INT I-SCK 7.1



ELEV 33	TDZE 32
---------	---------



CATEGORY	A	B	C	D
S-ILS 29R #	232/24		200 (200-1/2)	
S-LOC 29R	520/24 488 (500-1/2)		520/50 488 (500-1)	
CIRCLING	520-1 487 (500-1)	540-1 507 (600-1)	640-1 3/4 607 (700-1 3/4)	640-2 607 (700-2)
WIGBI FIX MINIMUMS (DUAL VOR RECEIVERS or DME REQUIRED)				
S-LOC 29R	360/24 328 (400-1/2)		360/26 328 (400-1/2)	
CIRCLING	500-1 467 (500-1)	540-1 507 (600-1)	640-1 3/4 607 (700-1 3/4)	640-2 607 (700-2)

HRL Rwy 11L-29R **⓪**

FAF to MAP 5.4 NM

Knots	60	90	120	150	180
Min:Sec	5:24	3:36	2:42	2:10	1:48

SW-2, 14 MAY 2026 to 11 JUN 2026

SW-2, 14 MAY 2026 to 11 JUN 2026