

WAAS CH <b>72910</b> W <b>11A</b>	APP CRS <b>114°</b>	Rwy Ldg TDZE <b>29</b> Apt Elev <b>33</b>
---	------------------------	---

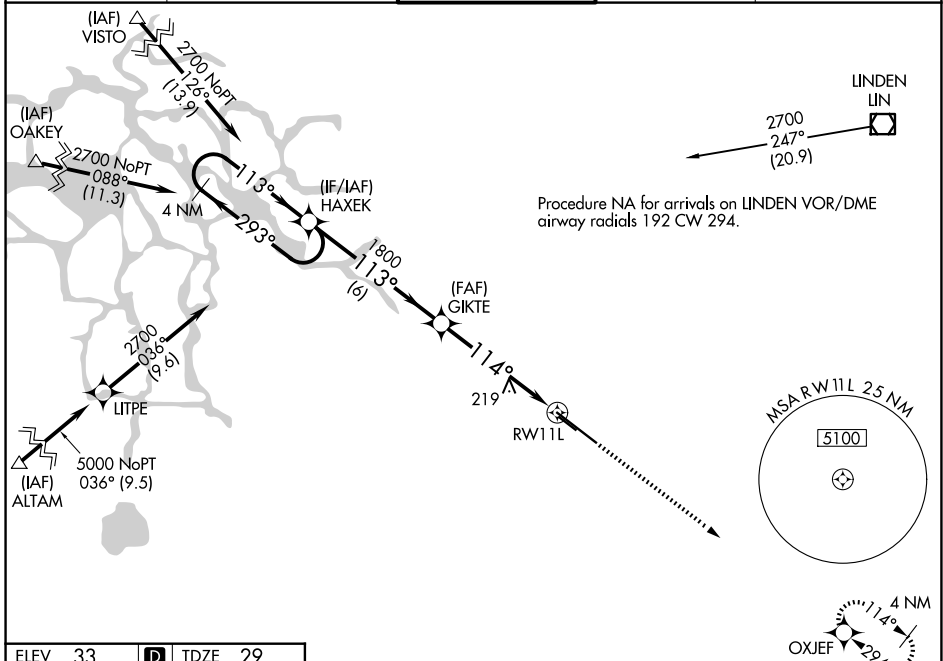
# RNAV (GPS) RWY 11L

STOCKTON METRO (SCK)

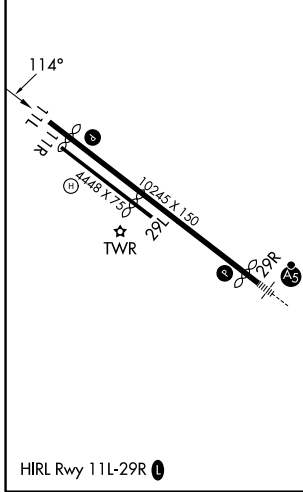
**▼** For uncompensated Baro-VNAV systems, LNAV/VNAV NA below -4°C (25°F) or above 54°C (130°F). DME/DME RNP-0.3 NA.

MISSED APPROACH: Climb to 2000 direct OXJEF and hold.

ATIS <b>118.25</b>	NORCAL APP CON <b>123.85 278.3</b> (SE-NW) <b>125.1 363.2</b> (N-SE)	STOCKTON TOWER * <b>120.3</b> (CTAF) <b>0 239.0</b>	GND CON <b>121.9</b>	UNICOM <b>122.95</b>
-----------------------	--	--	-------------------------	-------------------------



ELEV 33	<b>D</b>	TDZE 29
---------	----------	---------



	VGSi and RNAV glidepath not coincident (VGSi Angle 3.00/TCH 75).			
	4 NM Holding Pattern HAXEK		2000 OXJEF	
	2700 ← 293°		*1.2 NM to RW11L	
	113° →		RW11L	
	1800		1800	
	113°		114°	
	6 NM		4.2 NM	
			1.2 NM	
CATEGORY	A		B	
LPV DA	229-3/4		200 (200-3/4)	
LNAV/VNAV DA	471-1 1/2		442 (500-1 1/2)	
LNAV MDA	480-1 451 (500-1)		480-1 3/8 451 (500-1 3/8)	
CIRCLING	500-1 467 (500-1)	540-1 507 (600-1)	640-1 3/4 607 (700-1 3/4)	640-2 607 (700-2)

SW-2, 14 MAY 2026 to 11 JUN 2026

SW-2, 14 MAY 2026 to 11 JUN 2026