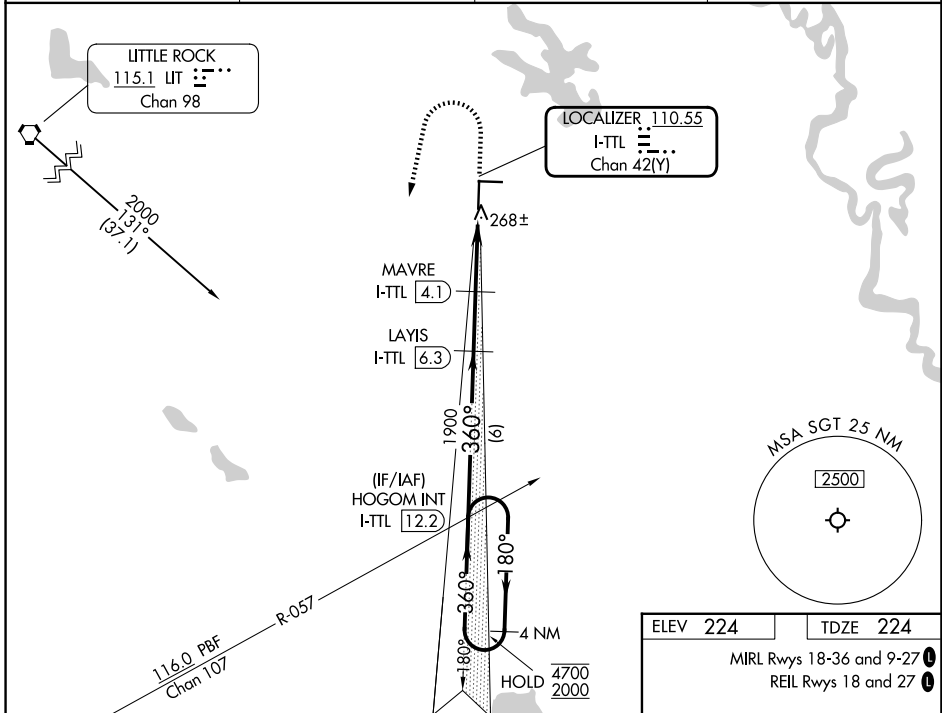


LOC/DME I-TTL 110.55 Chan 42(Y)	APP CRS 360°	Rwy Ldg TDZE 224 Apt Elev 224
--	------------------------	---

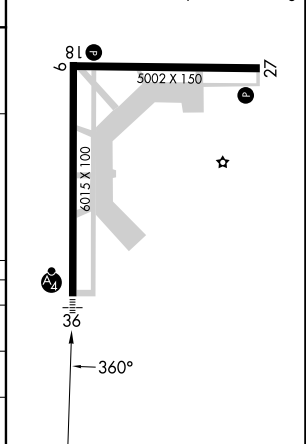
ILS or LOC RWY 36
STUTTGART MUNI CARL HUMPHREY FLD (SGT)

DME required.	MALSF	MISSED APPROACH: Climb to 700 then climbing left turn to 2000 on heading 190° and on IIT VORTAC R-131 to HOGOM INT/I-TTL 12.2 DME and hold.
<p>⚠ Rwy 36 helicopter visibility reduction below 3/4 SM NA. Inop table does not apply to S-ILS 36 all Cats. Circling Rwy 9, 27 NA at night. For inop ALS, increase S-LOC 36 Cat C and D visibility to 7/8 SM.</p>		

AWOS-3PT 119,025	LITTLE ROCK APP CON 135.4 353.6	CLNC DEL 123.7	UNICOM 122.8 (CTAF)
----------------------------	---	--------------------------	-------------------------------



ELEV 224	TDZE 224
MIRL Rwy 18-36 and 9-27	
REIL Rwy 18 and 27	



4 NM Holding Pattern	HOGOM INT I-TTL 12.2		700	2000	LIT R-131	HOGOM INT		
	LAYS I-TTL 6.3	MAVRE I-TTL 4.1	1900	1220	I-TTL 1.9	I-TTL 1.2		
GS 3.00° TCH 50	4700	2000	1900	1220	6 NM	2.1 NM	2.2 NM	0.8
CATEGORY	A	B	C	D				
S-ILS 36	424-3/4		200 (200-3/4)					
S-LOC 36	520-3/4		296 (300-3/4)					
CIRCLING	660-1	680-1	760-1 1/2	860-2				
	436 (500-1)	456 (500-1)	536 (600-1 1/2)	636 (700-2)				

SC-1, 14 MAY 2026 to 11 JUN 2026

SC-1, 14 MAY 2026 to 11 JUN 2026