

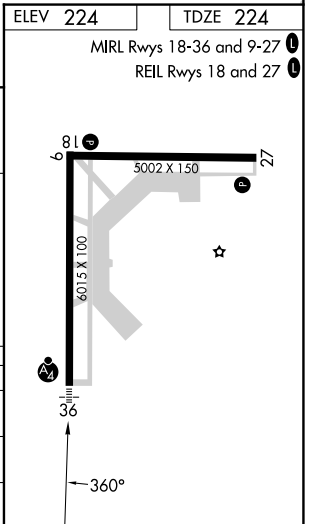
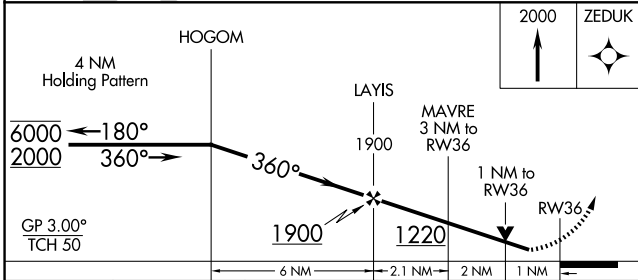
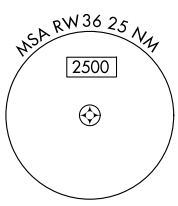
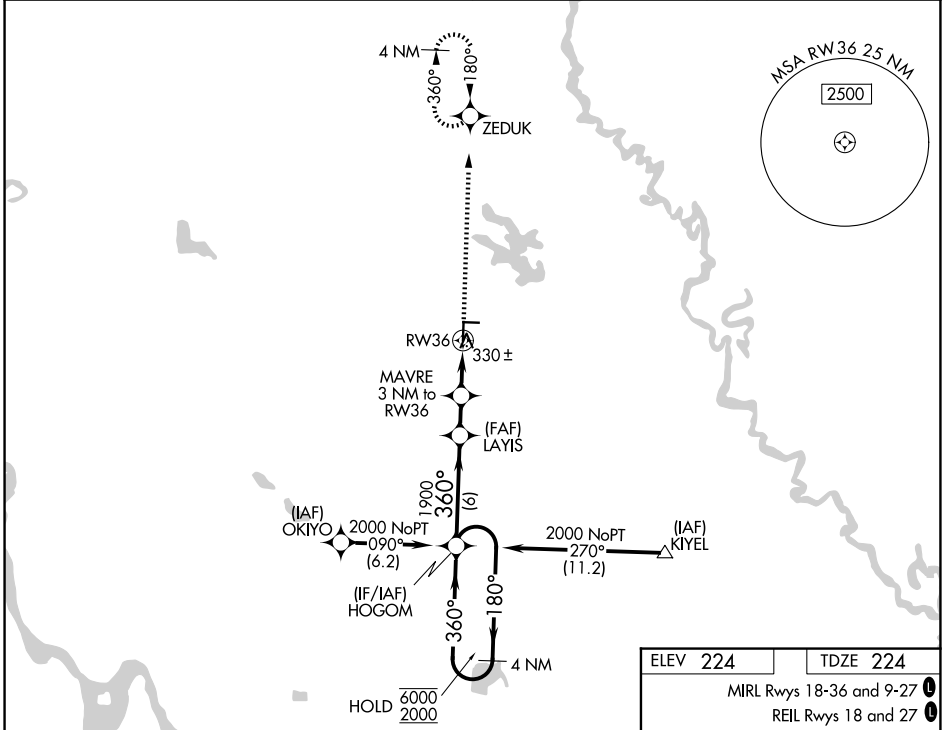
WAAS CH 97311 W36A	APP CRS 360°	Rwy Ldg TDZE 224 Apt Elev 224
--	------------------------	---

RNAV (GPS) RWY 36

STUTTART MUNI CARL HUMPHREY FLD (SGT)

RNP APCH - GPS.	MALSIF	MISSED APPROACH: Climb to 2000 direct ZEDUK and hold.
Circling Rwy 9, 27 NA at night. Inop table does not apply to LPV all Cats.		

AWOS-3PT 119.025	LITTLE ROCK APP CON 135.4 353.6	CLNC DEL 123.7	UNICOM 122.8 (CTAF)
----------------------------	---	--------------------------	-------------------------------



CATEGORY	A	B	C	D
LPV DA		474- ³ / ₄	250 (300- ³ / ₄)	
LNAV MDA		620- ³ / ₄	396 (400- ³ / ₄)	
CIRCLING	660-1 436 (500-1)	680-1 456 (500-1)	760-1 ¹ / ₂ 536 (600-1 ¹ / ₂)	860-2 636 (700-2)

SC-1, 14 MAY 2026 to 11 JUN 2026

SC-1, 14 MAY 2026 to 11 JUN 2026