

# HI-ILS or LOC Z RWY 4L

LOC I-SSC <b>110.1</b>	APCH CRS <b>043°</b>	Rwy Idg	4L	4R
		TDZE	<b>10,014</b>	<b>8014</b>
			<b>240</b>	<b>236</b>
		Arprt Elev	<b>241</b>	<b>241</b>

[USAF]

SHAW AFB (KSSC)

RADAR or DME required. RADAR required when R-6002 active.

▼ \* When ALS inop, increase vis to 1½ miles.



MISSED APPROACH: Climbing to 2000, intercept SSC TACAN R-042 to GABLE and hold.

ATIS ★ <b>132.125 270.1</b>	APP CON ★ <b>125.4 318.1</b>	TOWER ★ <b>126.65 254.25</b>	GND CON <b>126.1 275.8</b>
--------------------------------	---------------------------------	---------------------------------	-------------------------------

CAUTION: When Rwy 22L VGSi inop, circling to Rwy 22L NA at night. Terrain 239' MSL, 200' prior to threshold, 200' right of course.

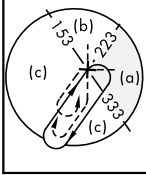
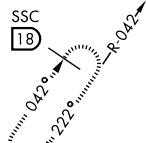
USAF Only: When VGSi inop, straight-in Rwy 4L authorized at night with MAJCOM A3 approval.

▲ 1400

CAUTION: When VGSi inop, procedure NA at night.

2047 ▲

LOCALIZER 110.1  
I-SSC [---.---]

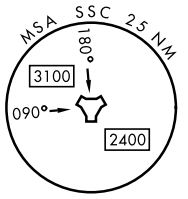


SHAW  
Chan 38 SSC [---.---]

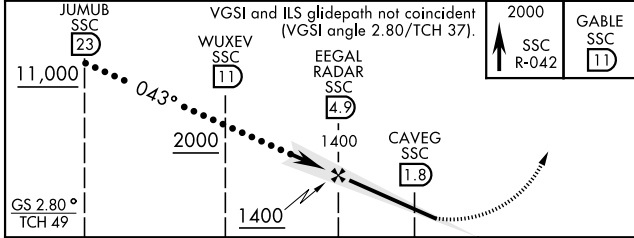
EERAL RADAR SSC [4.9]

(IF) WUXEV SSC [11]

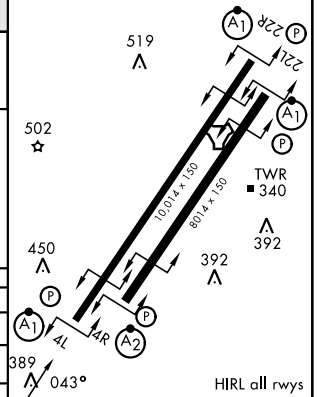
(IAF) JUMUB SSC [23]  
11,000



EMERG SAFE ALT 100 NM 3800



ELEV 241	TDZE 4L 240
	TDZE 4R 236



CATEGORY	C	D	E
S-ILS 4L *	490/50	250	(300-1)
S-LOC 4L *	780/55	540	(600-1)
SIDESTEP * 4R	780-1¾	544	(600-1¾)
CIRCLING	1000-2¼	1000-2½	1000-2¾
	759 (800-2¼)	759 (800-2½)	759 (800-2¾)

FAF to MAP 3.1 NM					
Knots	120	140	160	180	200
Min:Sec	1:33	1:20	1:10	1:02	0:56

# HI-ILS or LOC Z RWY 4L

SE-2, 14 MAY 2026 to 11 JUN 2026

SE-2, 14 MAY 2026 to 11 JUN 2026