

# HI-TACAN Z RWY 4L

TACAN SSC Chan <b>38</b>	APCH CRS <b>043°</b>	Rwy Idg TDZE <b>240</b> Arprt Elev <b>241</b>	4L <b>10,014</b>	4R <b>8014</b> <b>236</b> <b>241</b>	[USAF]	SHAW AFB (KSSC)
-----------------------------	-------------------------	---	---------------------	---	--------	-----------------

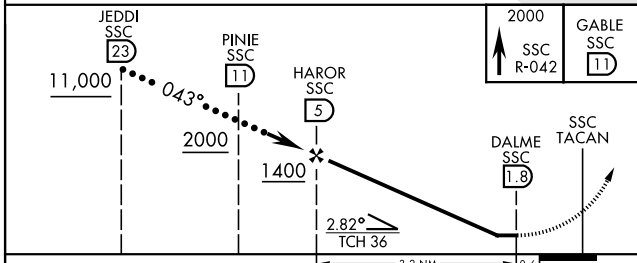
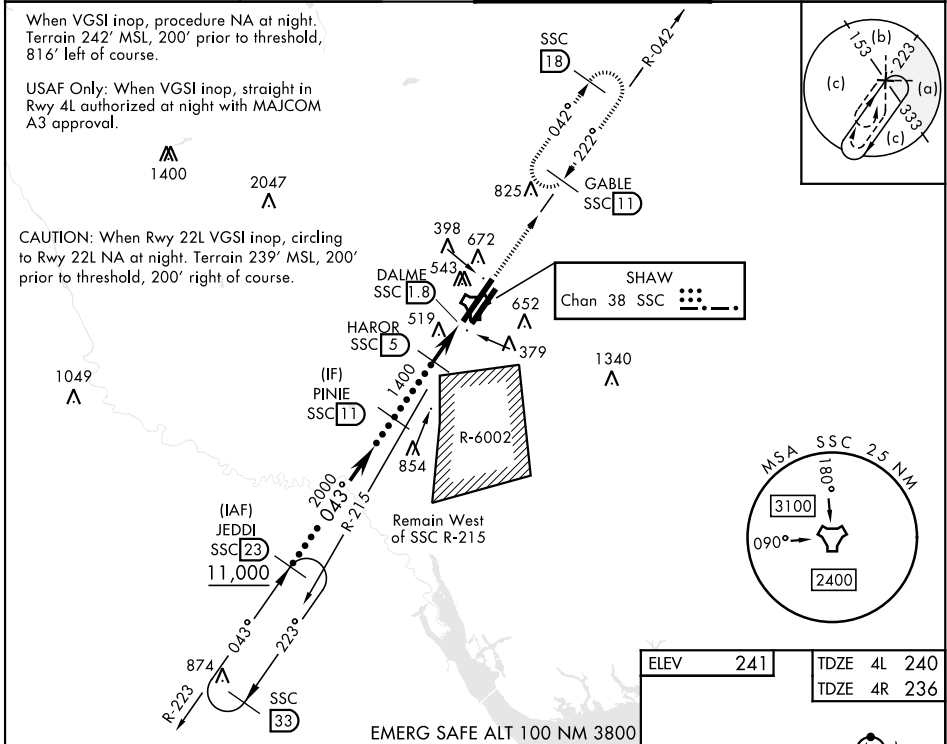
RADAR required when R-6002 active.

\* When ALS inop, increase vis to 1½ miles.

ALSF-1

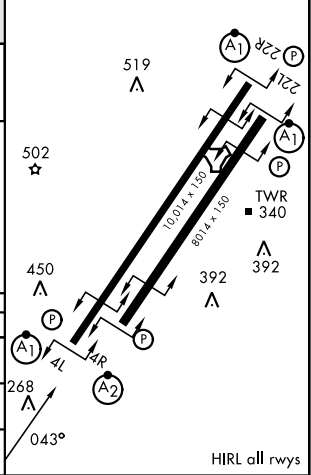
MISSED APPROACH: Climbing to 2000, intercept SSC TACAN R-042 to GABLE and hold.

ATIS★ <b>132.125 270.1</b>	APP CON★ <b>125.4 318.1</b>	TOWER★ <b>126.65 254.25</b>	GND CON <b>126.1 275.8</b>
-------------------------------	--------------------------------	--------------------------------	-------------------------------



CATEGORY	C	D	E
S-4L*	800/60	560 (600-1½)	
SIDESTEP 4R*	800-1½	564 (600-1½)	
CIRCLING	1000-2¼ 759 (800-2¼)	1000-2½ 759 (800-2½)	1000-2¾ 759 (800-2¾)

ELEV	241	TDZE 4L	240
		TDZE 4R	236



SE-2, 14 MAY 2026 to 11 JUN 2026

SE-2, 14 MAY 2026 to 11 JUN 2026

# HI-TACAN Z RWY 4L