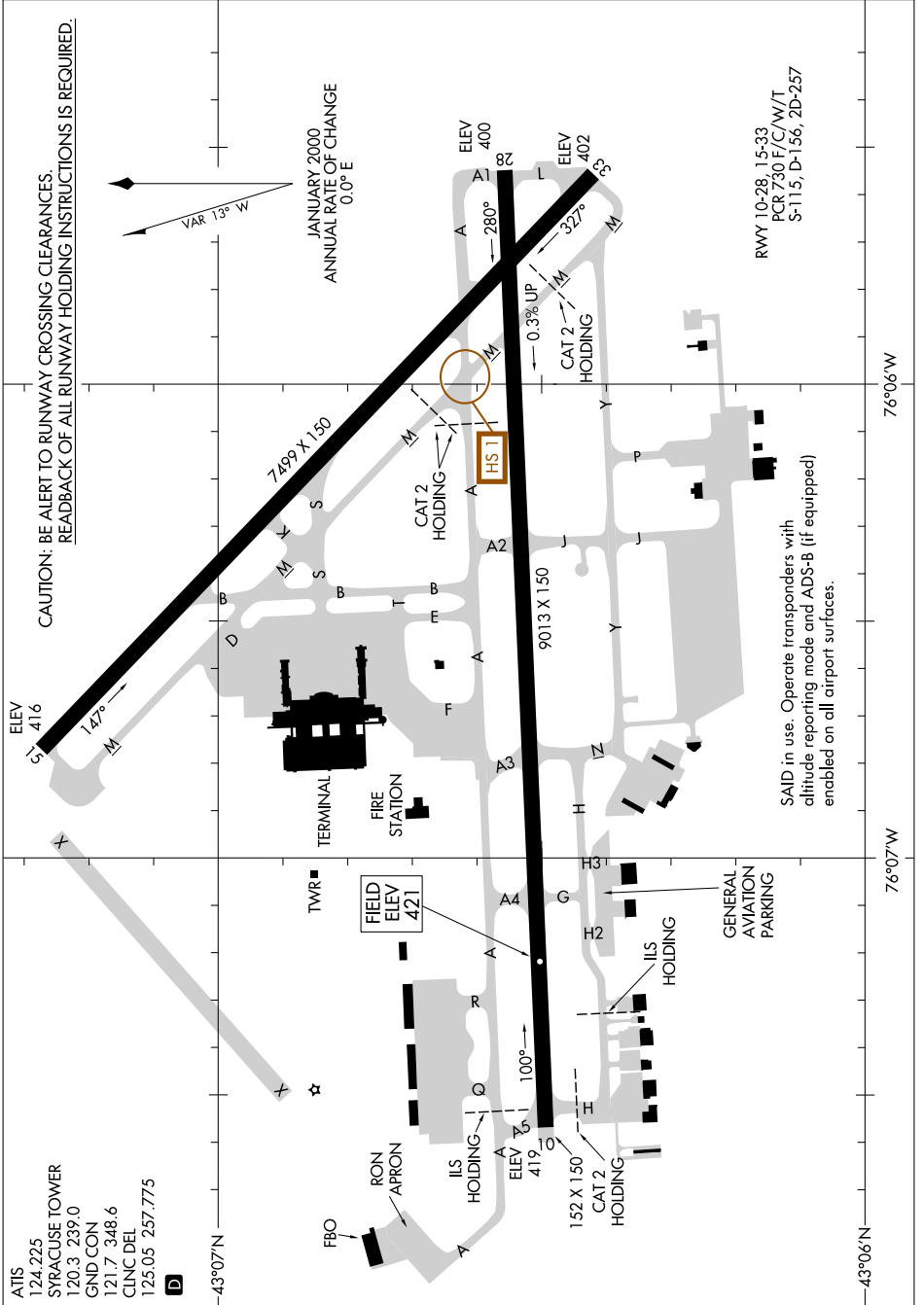


AIRPORT DIAGRAM

AL-411 (FAA)

SYRACUSE HANCOCK INTL (SYR)
SYRACUSE, NEW YORK

NE-2, 14 MAY 2026 to 11 JUN 2026



AIRPORT DIAGRAM

SYRACUSE, NEW YORK
SYRACUSE HANCOCK INTL (SYR)

NE-2, 14 MAY 2026 to 11 JUN 2026