

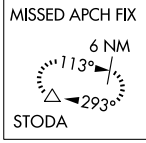
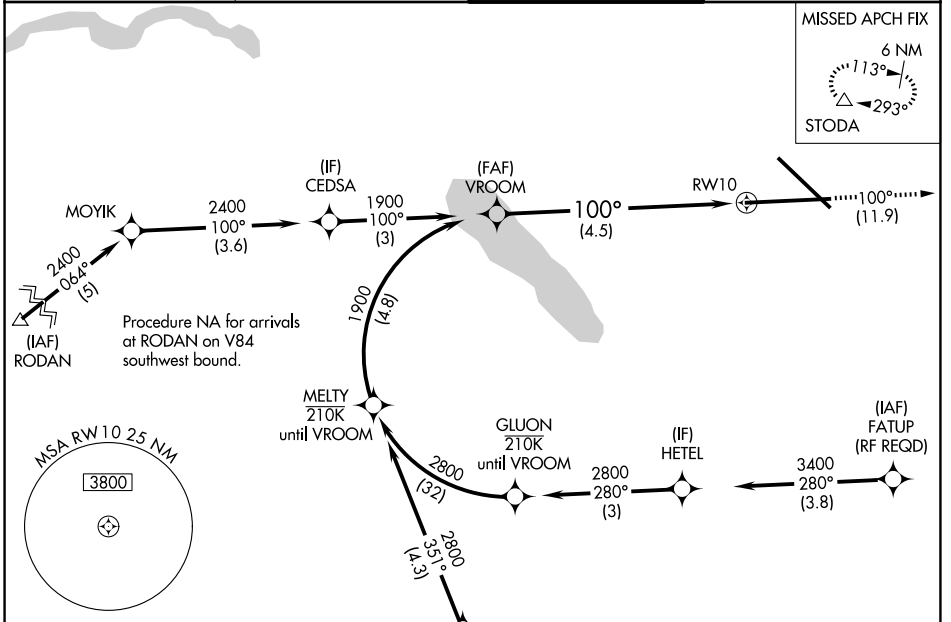
APP CRS <b>100°</b>	Rwy Ldg TDZE Apt Elev	<b>9013</b> <b>421</b> <b>421</b>
------------------------	-----------------------------	---

# RNAV (RNP) Y RWY 10

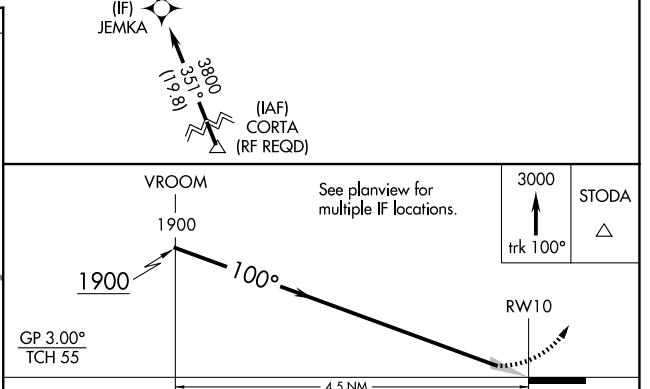
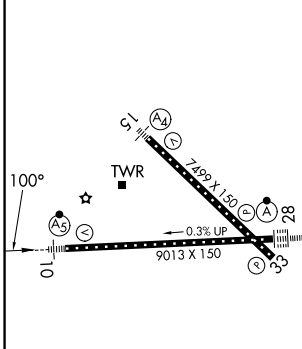
SYRACUSE HANCOCK INTL (SYR)

RNP AR APCH.	MALSR	MISSED APPROACH:
<p>▼ For uncompensated Baro-VNAV systems, procedure NA below -18°C or above 54°C. For inop ALS, increase RNP 0.15 all Cats visibility to 1½. For inop ALS, increase RNP 0.30 all Cats visibility to 1¾.</p>		<p>Climb to 3000 on track 100° to STODA and hold.</p>

ATIS <b>124.225</b>	SYRACUSE APP CON <b>126.125 269.125</b>	SYRACUSE TOWER <b>120.3 239.0</b>	GND CON <b>121.7 348.6</b>
------------------------	--	--------------------------------------	-------------------------------



ELEV 421	<b>D</b>	TDZE 421
----------	----------	----------



CATEGORY	A	B	C	D
RNP 0.15 DA		816/45	395 (400-¾)	
RNP 0.30 DA		881/55	460 (500-1)	

**AUTHORIZATION REQUIRED**

NE-2, 14 MAY 2026 to 11 JUN 2026

NE-2, 14 MAY 2026 to 11 JUN 2026