

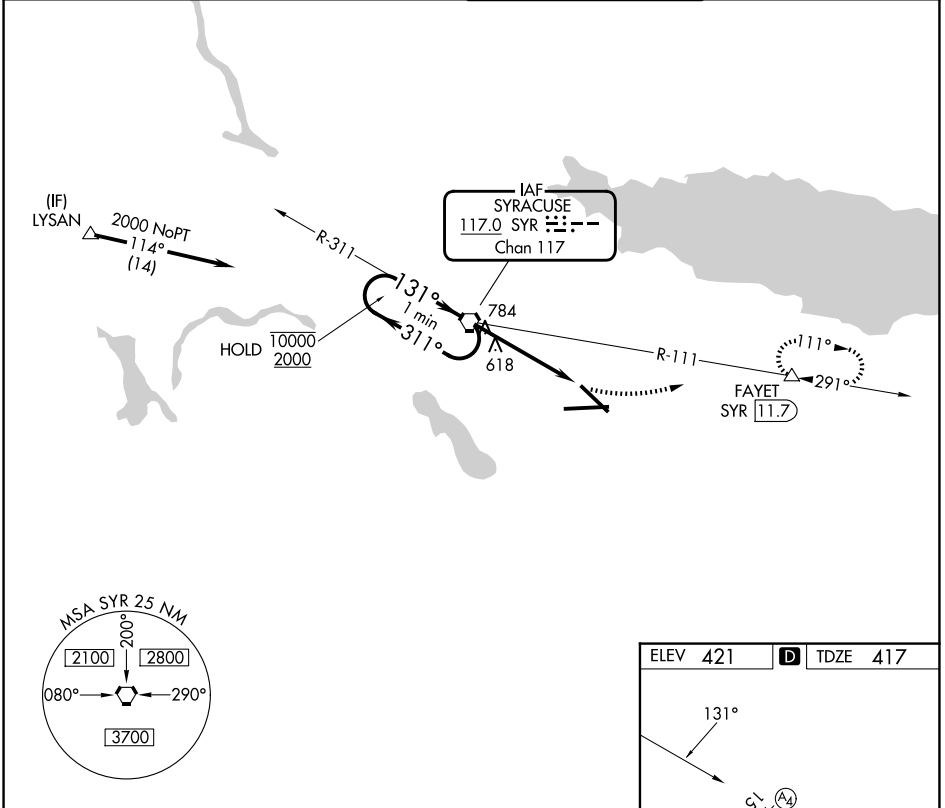
VORTAC SYR 117.0 Chan 117	APP CRS 131°	Rwy Ldg TDZE Apt Elev	7499 417 421
---	------------------------	-----------------------------	---

VOR RWY 15

SYRACUSE HANCOCK INTL (SYR)

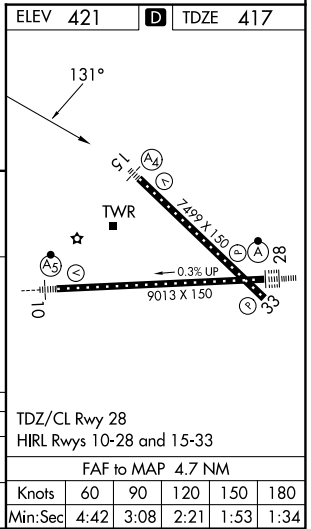
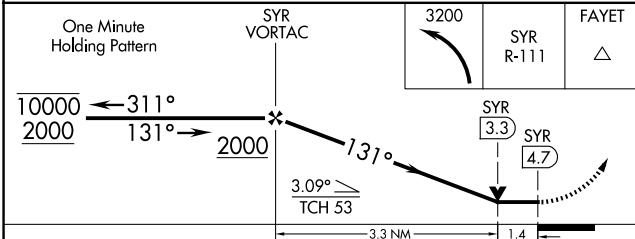
DME required.	MALS	MISSED APPROACH: Climbing left turn to 3200 on SYR VORTAC R-111 to FAYET/11.7 DME and hold, continue climb-in-hold to 3200.
<p>▼ Rwy 15 helicopter visibility reduction below 3/4 SM NA.</p> <p>▲ For inop ALS, increase Cat C/D visibility to 1 1/2 SM.</p>	(A4)	

ATIS 124.225	SYRACUSE APP CON 126.125 269.125	SYRACUSE TOWER 120.3 239.0	GND CON 121.7 348.6
------------------------	--	--------------------------------------	-------------------------------



NE-2, 14 MAY 2026 to 11 JUN 2026

NE-2, 14 MAY 2026 to 11 JUN 2026



CATEGORY	A	B	C	D
S-15	920-3/4 503 (500-3/4)		920-1 1/4 503 (500-1 1/4)	
CIRCLING	920-1 499 (500-1)		1020-1 1/2 599 (600-1 1/2)	1180-2 1/2 759 (800-2 1/2)