

FORT LEWIS, WASHINGTON

RNAV (GPS) RWY 15

APCH CRS	Rwy Idg	6124
151°	TDZE	300
	Arprt Elev	301

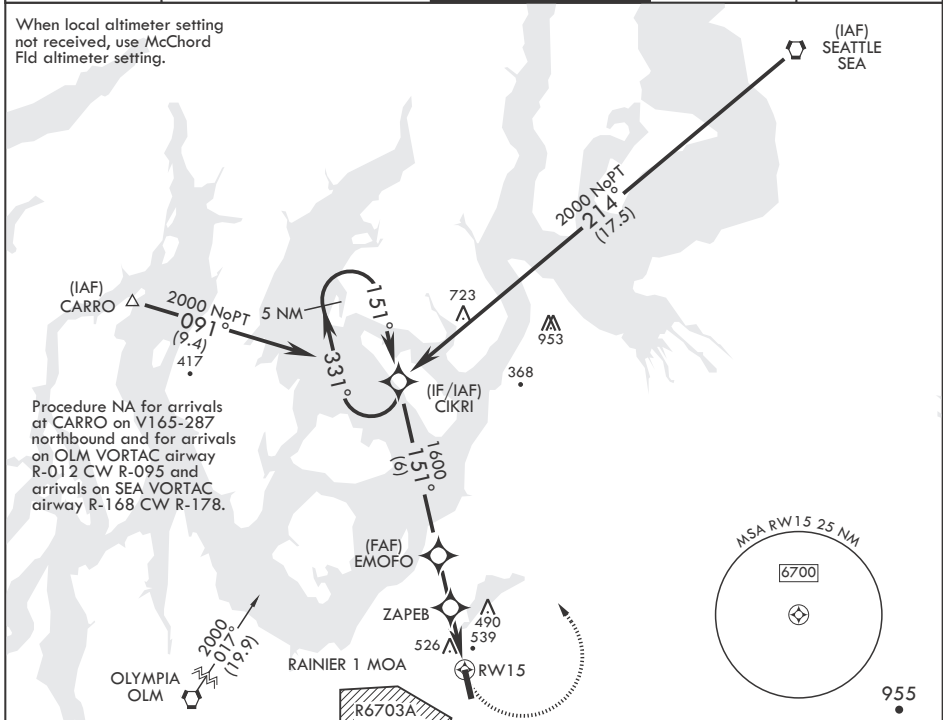
-(USA)

GRAY AAF (JOINT BASE LEWIS MCCHORD) (KGRF)

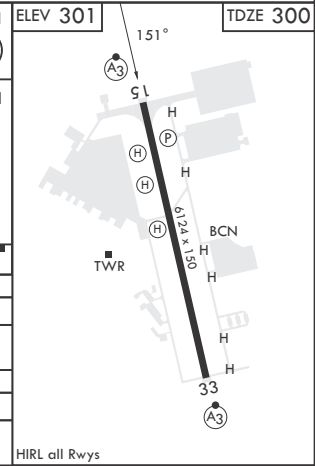
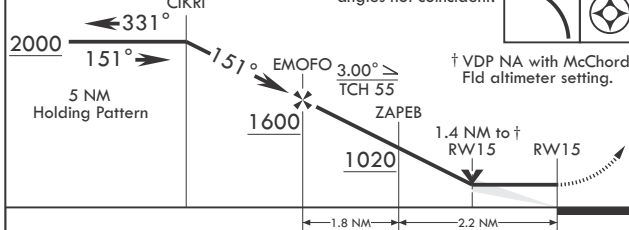
RNP APCH	SSALR	MISSED APPROACH: Climbing left turn to 2000 direct CIKRI and hold.
▼ * Circling not authorized W of Rwy 15-33.		

ATIS 124.65 306.2	SEATTLE APP CON/DEP CON 120.1 290.9	TOWER * 119.325 (CTAF) 256.8	GND CON 121.9 290.2	CLNC DEL 121.9 290.2
-----------------------------	---	--	-------------------------------	--------------------------------

When local altimeter setting not received, use McChord Fld altimeter setting.



2000	CIKRI	VGSI and descent angles not coincident.	2000	CIKRI	ELEV 301	TDZE 300
------	-------	---	------	-------	----------	----------



CATEGORY	A		B		C		D	
LNAV MDA	800/24	500	(500-½)		800/50	500	(500-1)	
CIRCLING*	840-1	539	(600-1)		840-1½	539	(600-1½)	
MC CHORD FLD ALTIMETER SETTING MINIMUMS								
LNAV MDA	820/24		520		(600-½)			
CIRCLING*	860-1	559	(600-1)		860-1½	559	(600-1½)	
					940-2	639	(700-2)	

FORT LEWIS, WASHINGTON

47°05'N - 122°35'W GRAY AAF (JOINT BASE LEWIS MCCHORD) (KGRF)

Amdt 3 10AUG23

RNAV (GPS) RWY 15

NW-1, 14 MAY 2026 to 11 JUN 2026

NW-1, 14 MAY 2026 to 11 JUN 2026