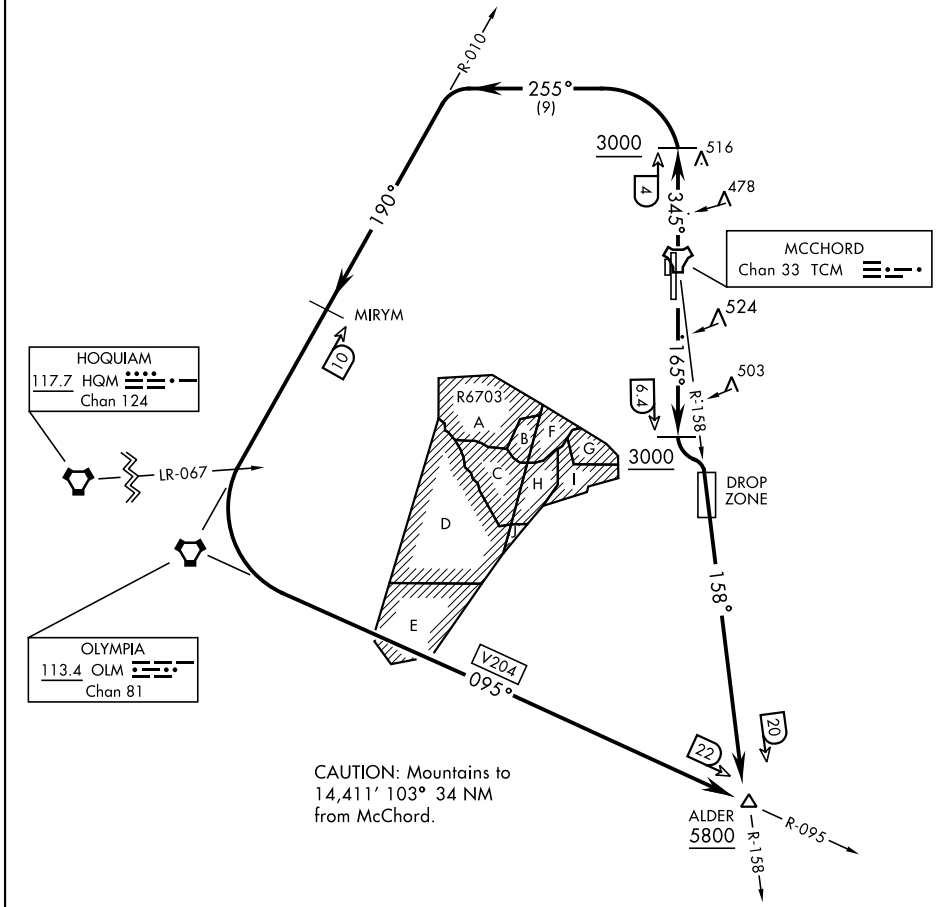


ALDER-TWO DEPARTURE (ALDER2.ALDER)

[USAF]

ATIS
 135.825 270.1
 GND CON
 118.175 279.65
 TOWER
 124.8 259.3
 SEATTLE DEP CON
 126.5 377.15

If unable to make ATC charted crossing
 restrictions advise ATC prior to departure.



NW-1, 14 MAY 2026 to 11 JUN 2026

NW-1, 14 MAY 2026 to 11 JUN 2026



DEPARTURE ROUTE DESCRIPTION

TAKEOFF RWY 16: Climb on track 165° to cross TCM TACAN 6.4 DME, at or above 3000. Then turn left to intercept TCM R-158 to cross ALDER at or above 5800.

TAKEOFF RWY 34: Climb on track 345° to cross TCM TACAN 4 DME at or above 3000. Then turn left heading 255° to intercept OLM VORTAC R-010 MIRYM then OLM. Then via V204 to cross ALDER at or above 5800.