

TACOMA, WASHINGTON

# ILS or LOC RWY 34

LOC I-TCM <b>108.5</b>	APCH CRS <b>345°</b>	Rwy Idg <b>10,108</b>
		TDZE <b>322</b>
		Arpt Elev <b>322</b>

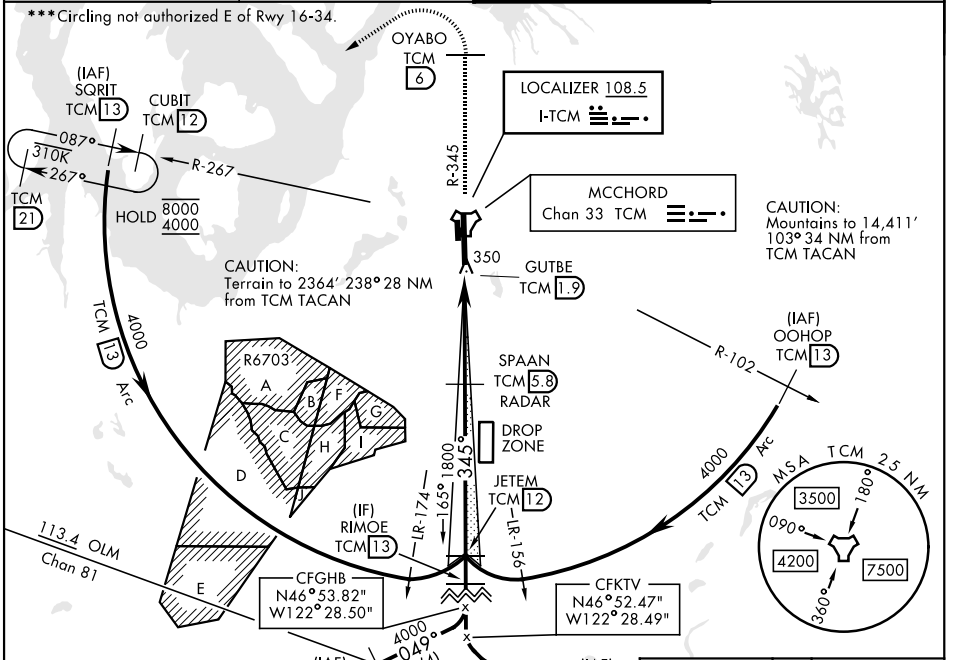
[USAF] MCCHORD FLD (JOINT BASE LEWIS MCCHORD) (KTCM)

RADAR or DME required.

ALSF-2

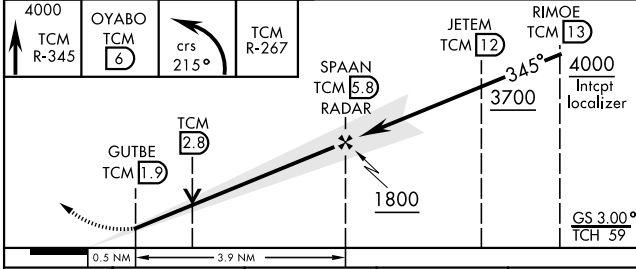
MISSED APPROACH: Climb to 4000 on TCM TACAN R-345 to OYABO, then turn left via 215° course to intercept TCM R-267 to CUBIT and hold, continue climb-in-hold to 4000. Cross OYABO at or above 3000.

ATIS <b>135.825 270.1</b>	SEATTLE APP CON <b>126.5 377.15</b>	TOWER <b>124.8 259.3</b>	GND CON <b>118.175 279.65</b>
------------------------------	--	-----------------------------	----------------------------------

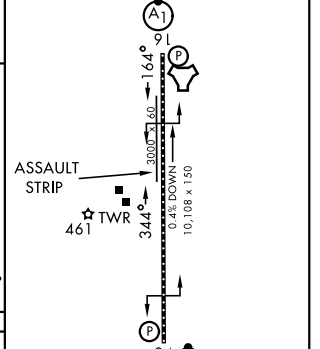


EMERG SAFE ALT 100 NM 16,600

4000 TCM R-345	OYABO TCM 6	crs 215°	TCM R-267
-------------------	----------------	-------------	-----------



ELEV 322	TDZE 322
----------	----------



CATEGORY	A	B	C	D
S-ILS 34*	522/18 200 (200-1/2)			
S-LOC 34**	860/40	538 (600-3/4)	860/55	538 (600-1)
CIRCLING***	940-1	618 (700-1)	940-1 3/4 618 (700-1 3/4)	940-2 618 (700-2)

HIRL Rwy 16-34	FAF to MAP 3.9 NM				
TDZL/RCLS Rwy 34	345°				
Knots	60	90	120	150	180
Min:Sec	3:54	2:36	1:57	1:34	1:18

TACOMA, WASHINGTON 47°08'N-122°29'W MCCHORD FLD (JOINT BASE LEWIS MCCHORD) (KTCM)  
 Amdt 5 30NOV23

# ILS or LOC RWY 34

NW-1, 14 MAY 2026 to 11 JUN 2026

NW-1, 14 MAY 2026 to 11 JUN 2026