

25191

# OLYMPIC-FOUR DEPARTURE

MCCHORD FLD (JOINT BASE LEWIS MCCHORD) (KTCM)  
[USAF] TACOMA, WASHINGTON

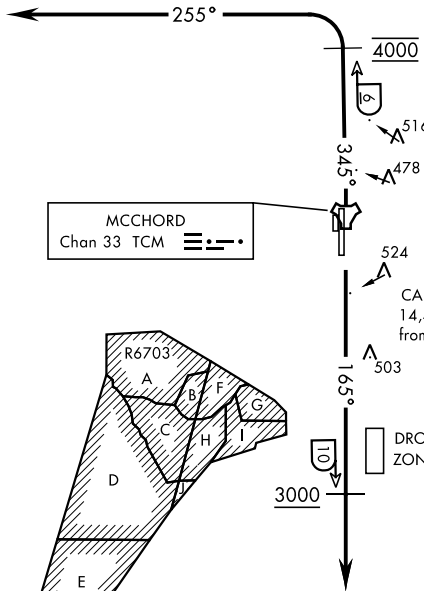
RADAR required

ATIS  
135.825 270.1  
GND CON  
118.175 279.65  
TOWER  
124.8 259.3  
SEATTLE DEP CON  
126.5 377.15

If unable to make ATC charted crossing restrictions advise ATC prior to departure.

Maximum 250 KIAS

SEATTLE  
116.8 SEA  
Chan 115



OLYMPIA  
113.4 OLM  
Chan 81

MCCHORD  
Chan 33 TCM

CAUTION: Mountains to  
14,411' 103° 34 NM  
from McChord.

① 2270' from Rwy 34



## DEPARTURE ROUTE DESCRIPTION

TAKEOFF RWY 16: Climb on track of 165° to cross TCM TACAN 10 DME at or above 3000. Expect radar vectors within TCM 8 DME. Maintain ATC assigned altitude.

TAKEOFF RWY 34: Climb on track 345° to cross TCM TACAN 6 DME at 4000. Then turn left tracking 255° to expect radar vectors. Maintain ATC assigned altitude.

# OLYMPIC-FOUR DEPARTURE

TACOMA, WASHINGTON  
MCCHORD FLD (JOINT BASE LEWIS MCCHORD) (KTCM)

NW-1, 14 MAY 2026 to 11 JUN 2026

NW-1, 14 MAY 2026 to 11 JUN 2026