

TACOMA, WASHINGTON

# TACAN RWY 34

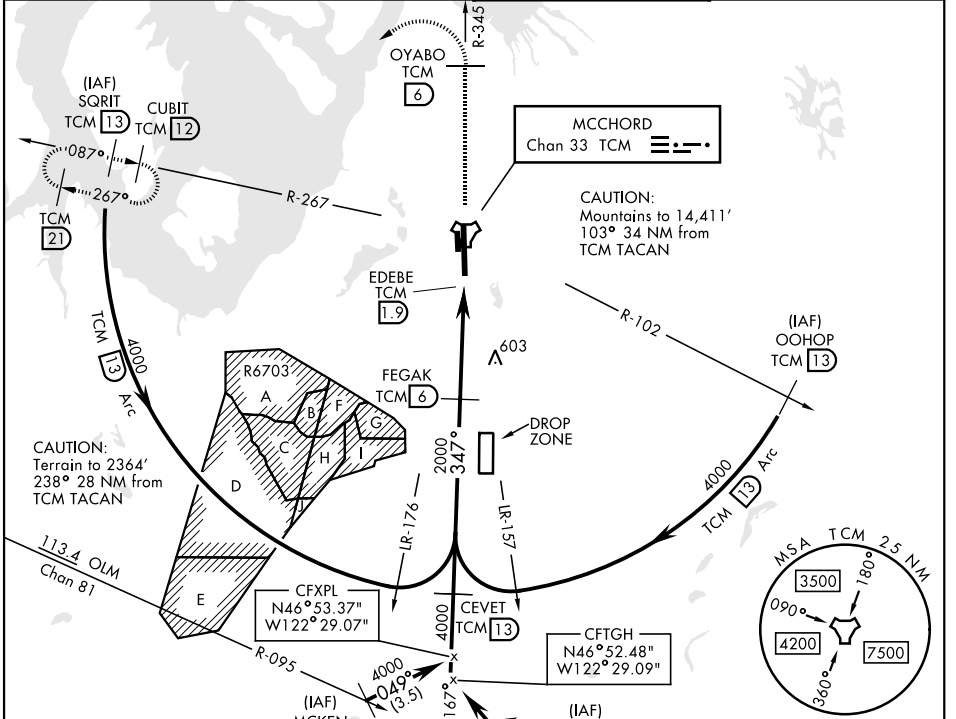
TACAN TCM Chan <b>33</b>	APCH CRS <b>347°</b>	Rwy Idg <b>10,108</b> TDZE <b>322</b> Arpt Elev <b>322</b>
--------------------------	----------------------	--

[USAF] MCCORD FLD (JOINT BASE LEWIS MCCORD) (KTCM)

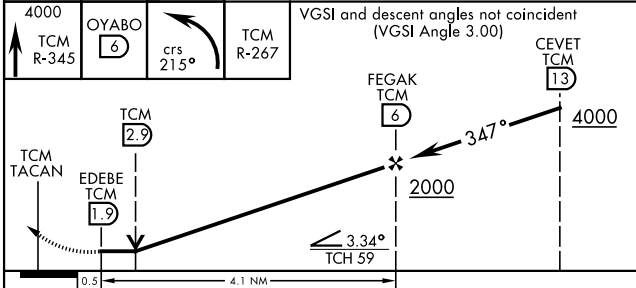
▼ \* When ALS inop, increase CAT AB RVR to 55, vis to 1 mile, CAT CD vis to 1½ miles.  
 \*\* Circling not authorized E of Rwy 16-34.

ALSF-2  MISSED APPROACH: Climb to 4000 on TCM TACAN R-345 to OYABO, then turn left via 215° course to intercept TCM R-267 to CUBIT and hold. Cross OYABO at or above 3000. Continue climb-in-hold to 4000.

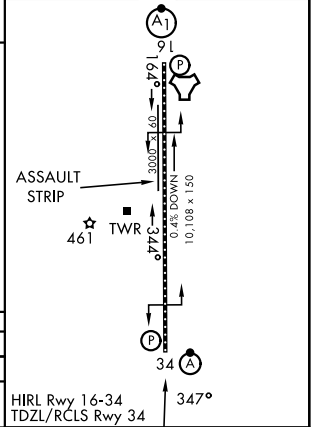
ATIS <b>135.825 270.1</b>	SEATTLE APP CON <b>126.5 377.15</b>	TOWER <b>124.8 259.3</b>	GND CON <b>118.175 279.65</b>
------------------------------	--	-----------------------------	----------------------------------



EMERG SAFE ALT 100 NM 16,600



ELEV	322	TDZE	322
------	-----	------	-----



CATEGORY	A	B	C	D
S-34*	860/24	538 (600-½)	860/55	538 (600-1)
CIRCLING **	940-1	618 (700-1)	940-1½ 618 (700-1½)	940-2 618 (700-2)

TACOMA, WASHINGTON 47°08'N-122°29'W MCCORD FLD (JOINT BASE LEWIS MCCORD) (KTCM)

Amtd 5 20APR23

# TACAN RWY 34

NW-1, 14 MAY 2026 to 11 JUN 2026

NW-1, 14 MAY 2026 to 11 JUN 2026