

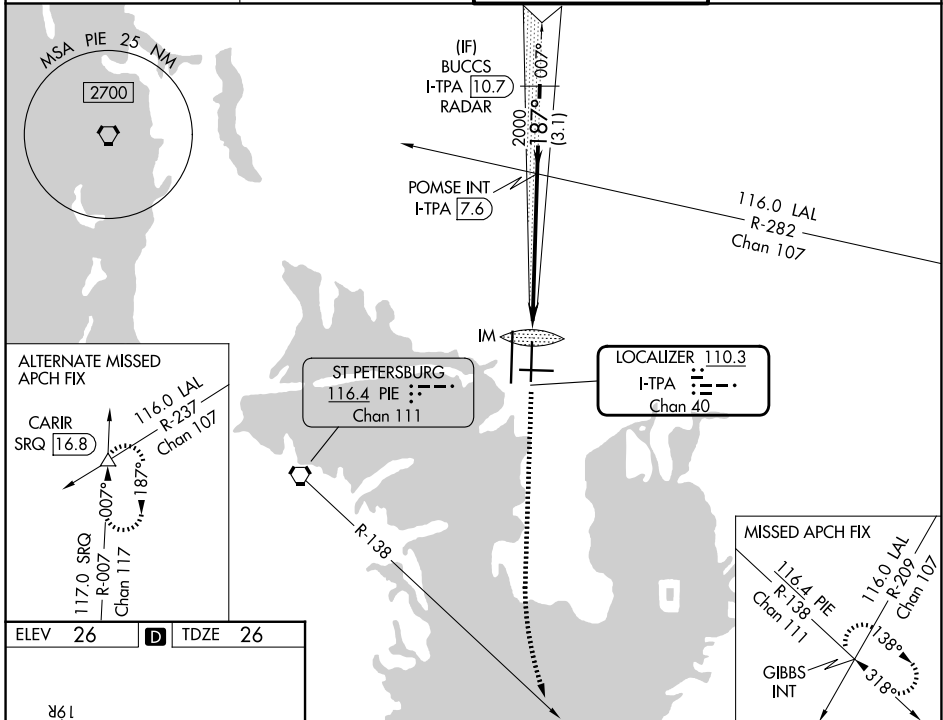
LOC/DME I-TPA 110.3 Chan 40	APP CRS 187°	Rwy Ldg 8300 TDZE 26 Apt Elev 26
---	------------------------	---

ILS RWY 19L (CAT II)

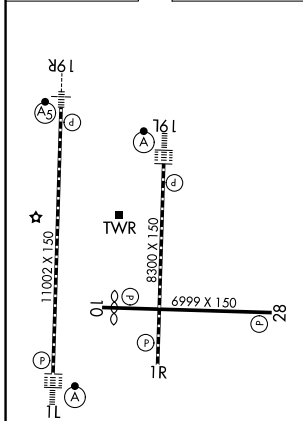
TAMPA INTL (TPA)

RADAR required for procedure entry.		ALSF-2 	MISSED APPROACH: Climb to 600 then climbing left turn to 4000 on heading 160° and on PIE VORTAC R-138 to GIBBS INT and hold.
<p> Simultaneous approach authorized.</p> <p> RVR 1000 authorized with specific OPSPEC, MSPEC, or LOA approval and use of autoland or HUD to touchdown.</p>			

D-ATIS 126.45	TAMPA APP CON 118.5 307.175	TAMPA TOWER 119.5 269.4	GND CON 121.7 269.4
-------------------------	---------------------------------------	-----------------------------------	-------------------------------



ELEV 26	D	TDZE 26
---------	----------	---------



600	4000	PIE R-138	GIBBS INT	VGSI and ILS glidepath not coincident (VGSI Angle 3.00/TCH 74).
hdg 160°				
POMSE INT I-TPA 7.6		BUCCS I-TPA 10.7 RADAR		
2000		2000		3000
IM		187°		GS 3.00° TCH 51
1048'		6 NM		3.1 NM
CATEGORY	A	B	C	D
S-ILS 19L	RA 100/12		100	DA 126

REIL Rwy 1R
HIRL Rwys 1L-19R, 1R-19L, and 10-28
TDZL/RCLS Rwys 1L and 19L

CATEGORY II ILS - SPECIAL AIRCREW & AIRCRAFT CERTIFICATION REQUIRED

SE-3, 14 MAY 2026 to 11 JUN 2026

SE-3, 14 MAY 2026 to 11 JUN 2026