

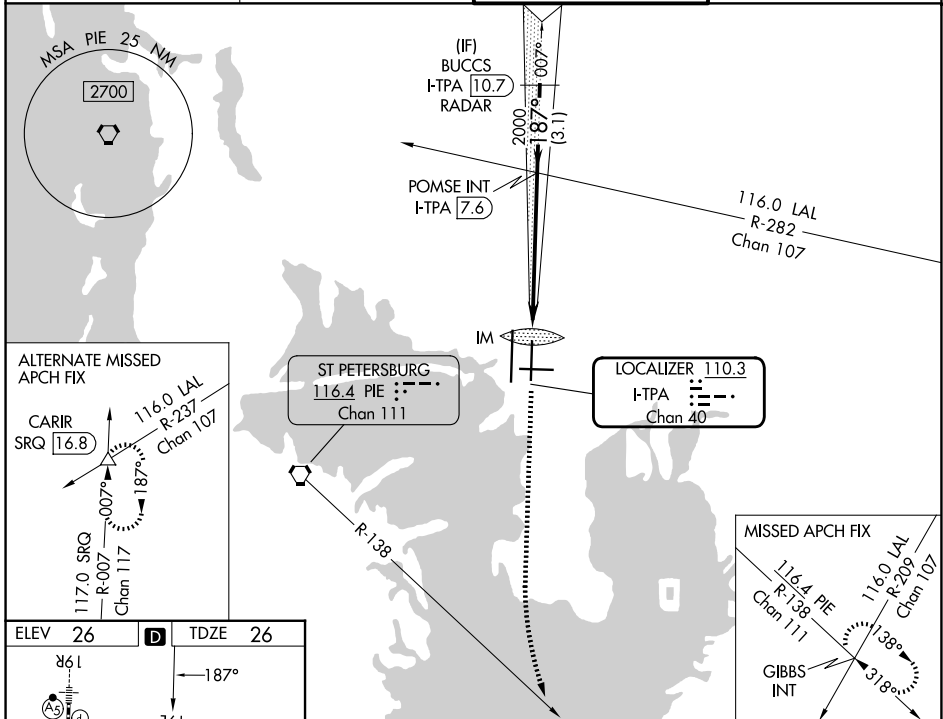
LOC/DME I-TPA 110.3 Chan 40	APP CRS 187°	Rwy Ldg TDZE Apt Elev	8300 26 26
--	------------------------	-----------------------------	---------------------------------------

ILS or LOC RWY 19L

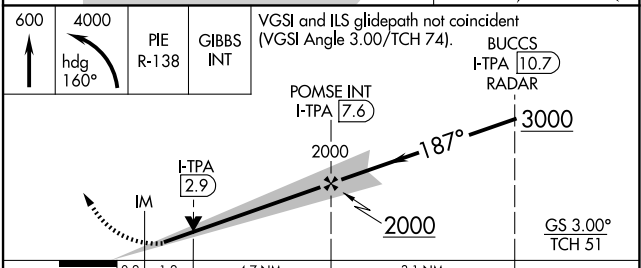
TAMPA INTL (TPA)

RADAR required for procedure entry.		ALSF-2 	MISSED APPROACH: Climb to 600 then climbing left turn to 4000 on heading 160° and on PIE VORTAC R-138 to GIBBS INT and hold.
Simultaneous approach authorized. For inop ALS, increase S-ILS 19L Cat E visibility to RVR 4000 and S-LOC 19L Cat C, D, and E visibility to 1 3/8 SM.			

D-ATIS 126.45	TAMPA APP CON 118.5 307.175	TAMPA TOWER 119.5 269.4	GND CON 121.7 269.4
-------------------------	---------------------------------------	-----------------------------------	-------------------------------



ELEV 26	D	TDZE 26			
19L	187°				
11003 X 1.50	8300 X 1.50	6999 X 1.50			
TWR	IM	19R			
REIL Rwy 1R					
HIRL Rwys 1L-19R, 1R-19L, and 10-28					
TDZL/RCLS Rwys 1L and 19L					
FAF to MAP 6.0 NM					
Knots	60	90	120	150	180
Min:Sec	6:00	4:00	3:00	2:24	2:00



CATEGORY	A	B	C	D	E
S-ILS 19L	226/18 200 (200-1/2)				
S-LOC 19L	520/24	494 (500-1/2)	520/50	494 (500-1)	
CIRCLING	600-1	574 (600-1)	680-1 3/4 654 (700-1 3/4)	980-3 954 (1000-3)	NA

SE-3, 14 MAY 2026 to 11 JUN 2026

SE-3, 14 MAY 2026 to 11 JUN 2026