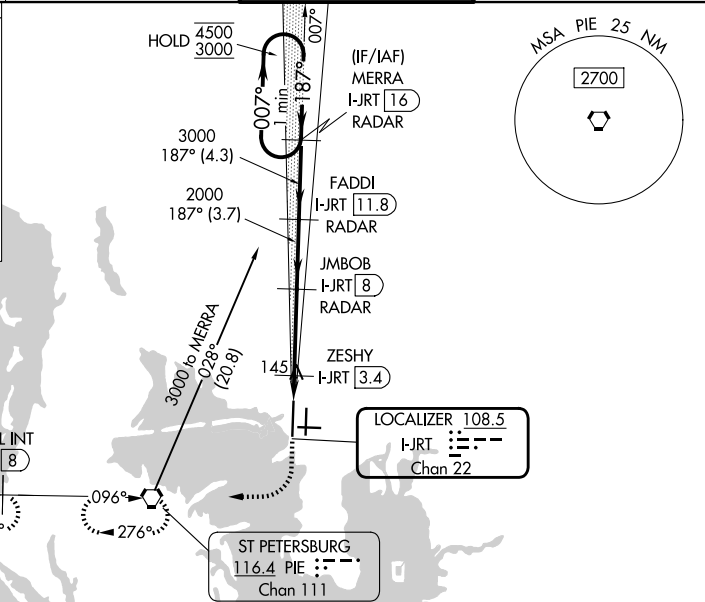
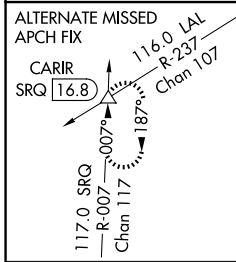


LOC/DME I-JRT 108.5 Chan 22	APP CRS 187°	Rwy Ldg 11002 TDZE 21 Apt Elev 26
---	------------------------	--

ILS or LOC RWY 19R

TAMPA INTL (TPA)

DME or RADAR required.		MALS R 	MISSED APPROACH: Climb to 500 then climbing right turn to 2000 direct PIE VORTAC and hold, continue climb-in-hold 2000. (TACAN aircraft climb to 500 then climbing right turn to 2000 direct PIE VORTAC then on PIE VORTAC R-276 to LAFAL INT/PIE 8 DME and hold W, RT, 096° inbound.)	
<p>Simultaneous approach authorized. For inop ALS, increase S-ILS 19R Cat E visibility to RVR 4000 and S-LOC 19R Cats C/D/E visibility to RVR 5500. *RVR 1800 authorized with use of FD or AP or HUD to DA.</p>				
D-ATIS 126.45	TAMPA APP CON 118.5 307.175	TAMPA TOWER 119.5 269.4	GND CON 121.7 269.4	



ELEV 26	TDZE 21
REIL Rwy 1R TDZL/RCLS Rwy 1L and 19L HIRL Rwy 1L-19R, 1R-19L, and 10-28	
FAF to MAP 6 NM	
Knots	60 90 120 150 180
Min:Sec	6:00 4:00 3:00 2:24 2:00

500	2000	PIE	VGSI and ILS glidepath not coincident (VGSI Angle 3.00/TCH 71).	One Minute Holding Pattern	
			FADDI I-JRT 11.8 RADAR MERRA I-JRT 16 RADAR JMBOB I-JRT 8 RADAR ZESHY I-JRT 3.4 I-JRT 2 GS 3.00° TCH 54		
CATEGORY	A	B	C	D	E
S-ILS 19R*	221/24 200 (200-½)				
S-LOC 19R	400/24 379 (400-½)		400/35 379 (400-⅝)		
CIRCLING	600-1 574 (600-1)		680-1¼ 654 (700-1¼)		980-3 954 (1000-3)

SE-3, 14 MAY 2026 to 11 JUN 2026

SE-3, 14 MAY 2026 to 11 JUN 2026