

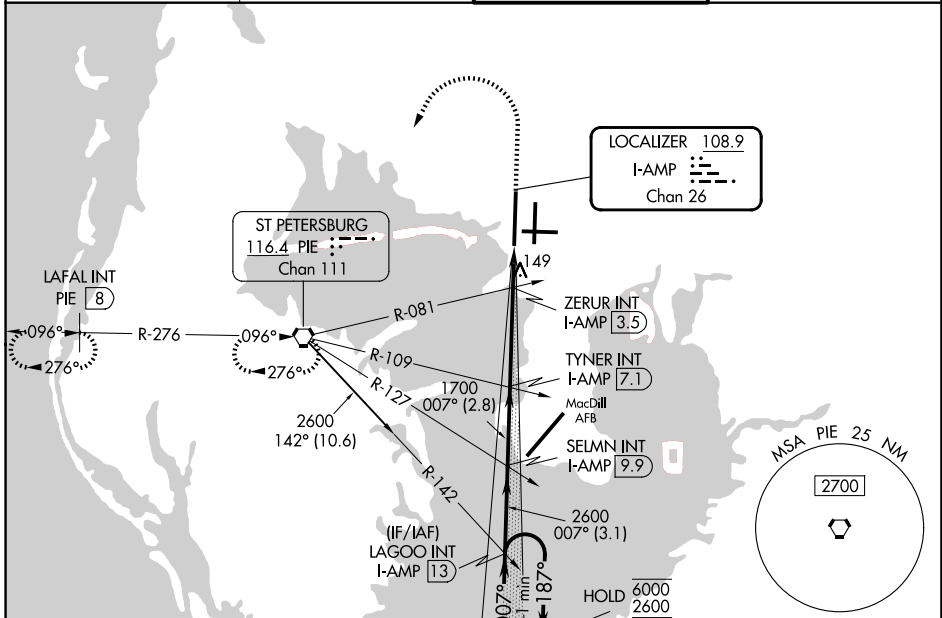
LOC/DME I-AMP 108.9 Chan 26	APP CRS 007°	Rwy Ldg 10800 TDZE 11 Apt Elev 26
---	------------------------	--

ILS or LOC RWY 1L

TAMPA INTL (TPA)

DME and RADAR required.	ALSF-2 	MISSED APPROACH: Climb to 500 then climbing left turn to 2000 direct PIE VORTAC and hold, continue climb-in-hold to 2000. (TACAN aircraft climb to 500 then climbing left turn to 2000 direct PIE VORTAC then on PIE VORTAC R-276 to LAFAL INT/PIE 8 DME and hold W, RT, 096° inbound).
<p> Simultaneous approach authorized.</p> <p> For inop ALS, increase S-ILS 1L Cat E visibility to RVR 4000 and S-LOC 1L Cat E visibility to RVR 6000.</p>		

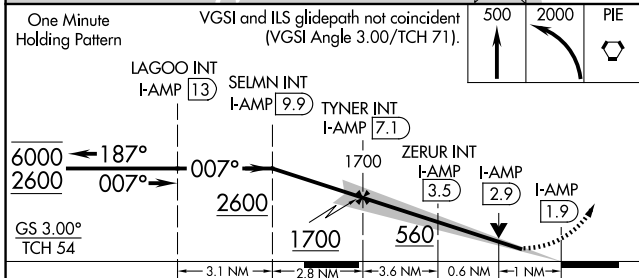
D-ATIS 126.45	TAMPA APP CON 118.5 307.175	TAMPA TOWER 119.5 269.4	GND CON 121.7 269.4
-------------------------	---------------------------------------	-----------------------------------	-------------------------------



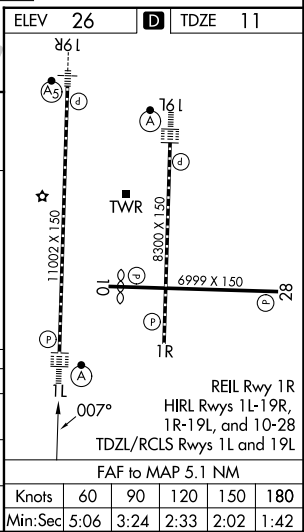
SE-3, 14 MAY 2026 to 11 JUN 2026

SE-3, 14 MAY 2026 to 11 JUN 2026

ELEV 26		TDZE 11
---------	--	---------



One Minute Holding Pattern	VGSI and ILS glidepath not coincident (VGSI Angle 3.00/TCH 71).				
LAGOO INT I-AMP 13	SELMN INT I-AMP 9.9	TYNER INT I-AMP 7.1	ZERUR INT I-AMP 3.5	I-AMP 2.9	I-AMP 1.9
6000	2600	1700	560		
GS 3.00°					
TCH 54					
	3.1 NM	2.8 NM	3.6 NM	0.6 NM	1 NM
CATEGORY	A	B	C	D	E
S-ILS 1L	211/18 200 (200-½)				
S-LOC 1L	400/24	389 (400-½)	400/35	389 (400-¾)	
CIRCLING	600-1	574 (600-1)	680-1¾ 654 (700-1¾)	980-3	954 (1000-3)



FAF to MAP 5.1 NM					
Knots	60	90	120	150	180
Min:Sec	5:06	3:24	2:33	2:02	1:42