

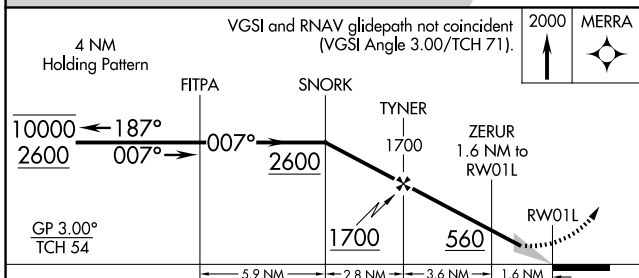
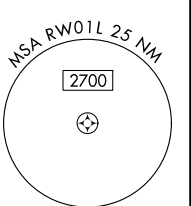
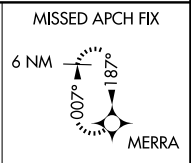
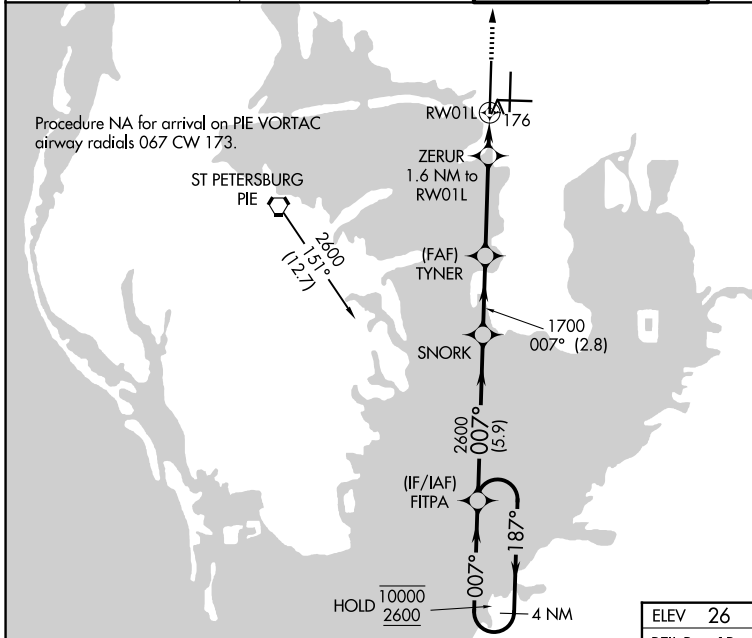
WAAS CH 50406 W01A	APP CRS 007°	Rwy Ldg 10800 TDZE 11 Apt Elev 26
---------------------------------	------------------------	--

RNAV (GPS) Y RWY 1L

TAMPA INTL (TPA)

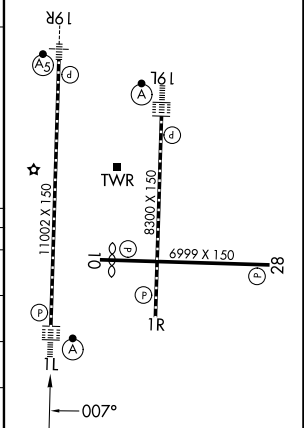
RNP APCH - GPS.		ALSF-2 	MISSED APPROACH: Climb to 2000 direct MERRA and hold.
<p>⚠ For uncompensated Baro-VNAV systems, LNAV/VNAV NA below 4°C or above 54°C. ⚠ For inop ALSF, increase LPV Cat E visibility to RVR 4000, LNAV/VNAV all Cats visibility to RVR 6000, and LNAV Cat E visibility to 1 1/4 SM. Simultaneous approach authorized with Rwy 1R. LNAV procedure NA during simultaneous operations. Use of FD or AP required during simultaneous operations.</p>			

D-ATIS 126.45	TAMPA APP CON 118.5 307.175	TAMPA TOWER 119.5 269.4	GND CON 121.7 269.4
-------------------------	---------------------------------------	-----------------------------------	-------------------------------



ELEV 26	D TDZE 11
---------	------------------

REIL Rwy 1R
HIRL Rwsy 1L-19R, 1R-19L, and 10-28
TDZL/RCLS Rwsy 1L and 19L



CATEGORY	A	B	C	D	E
LPV DA	211/18		200 (200-1/2)		
LNAV/VNAV DA	431/40		420 (500-3/4)		
LNAV MDA	440/24	429 (500-1/2)	440/40	429 (500-3/4)	
CIRCLING	600-1	574 (600-1)	680-1 3/4 654 (700-1 3/4)	980-3	954 (1000-3)

SE-3, 14 MAY 2026 to 11 JUN 2026

SE-3, 14 MAY 2026 to 11 JUN 2026