

WAAS CH <b>87105</b> <b>W01B</b>	APP CRS <b>007°</b>	Rwy Ldg <b>8300</b> TDZE <b>21</b> Apt Elev <b>26</b>
--	------------------------	---

# RNAV (GPS) Y RWY 1R

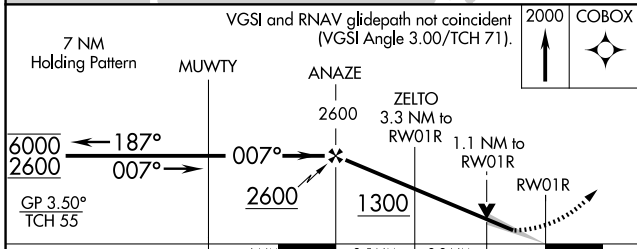
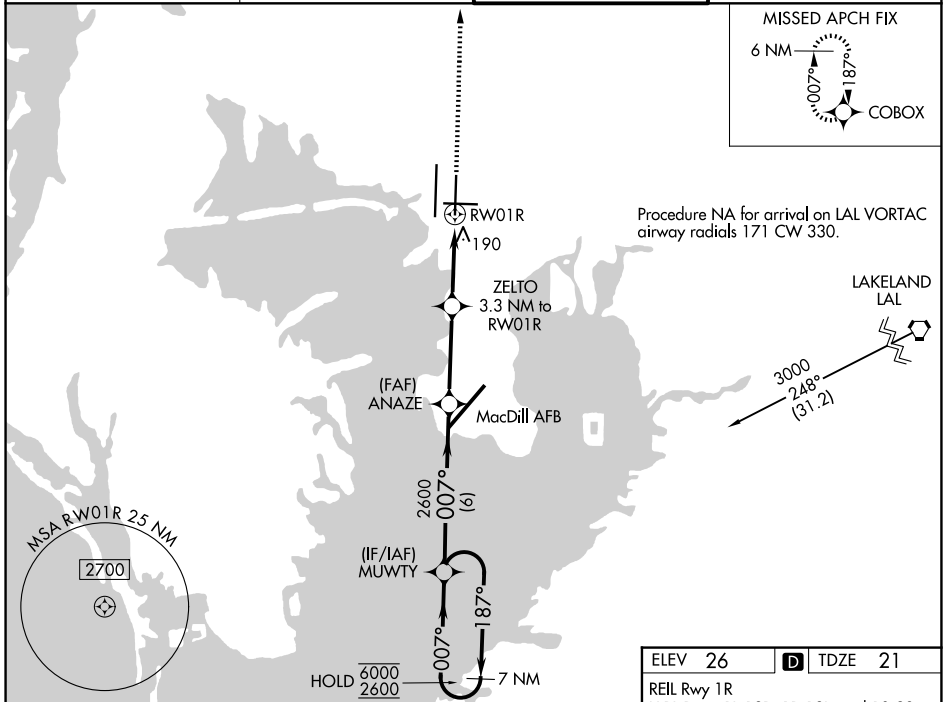
TAMPA INTL (TPA)

RNP APCH - GPS.

▼ For uncompensated Baro-VNAV systems, LNAV/VNAV NA below 4°C or above 54°C.  
▲ Simultaneous approach authorized with Rwy 1L. LNAV procedure NA during simultaneous operations. Use of FD or AP required during simultaneous operations.

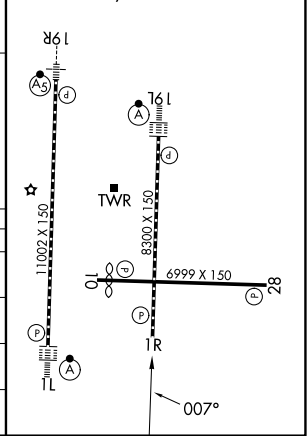
MISSED APPROACH: Climb to 2000 direct COBOX and hold.

D-ATIS <b>126.45</b>	TAMPA APP CON <b>118.5 307.175</b>	TAMPA TOWER <b>119.5 269.4</b>	GND CON <b>121.7 269.4</b>
-------------------------	---------------------------------------	-----------------------------------	-------------------------------



ELEV 26	<b>D</b> TDZE 21
---------	------------------

REIL Rwy 1R  
HIRL Rwys 1L-19R, 1R-19L, and 10-28  
TDZL/RCLS Rwys 1L and 19L



CATEGORY	A	B	C	D	E
LPV DA	291/45	270 (300- $\frac{7}{8}$ )			NA
LNAV/VNAV DA	440/60	419 (500- $1\frac{1}{4}$ )			NA
LNAV MDA	440/55	419 (500-1)	440/60	419 (500- $1\frac{1}{4}$ )	
CIRCLING	600-1	574 (600-1)	680- $1\frac{3}{4}$ 654 (700- $1\frac{3}{4}$ )	980-3	954 (1000-3)